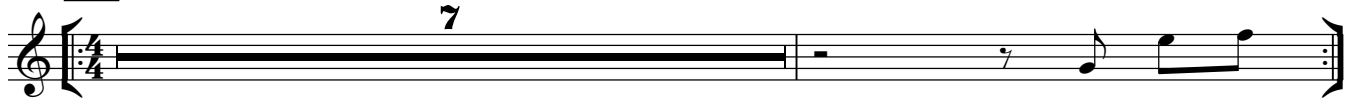


Kira - Kira

Intro



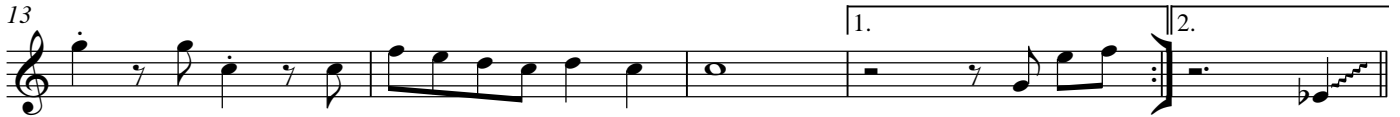
Musical notation for the Intro section, starting with a treble clef and a 4/4 time signature. A bar line with a '7' above it indicates a seven-measure rest. The section concludes with a quarter rest followed by an eighth note G4, a quarter note A4, and a quarter note B4.

9 **A**



Musical notation for section A, starting with a treble clef and a 4/4 time signature. The melody consists of quarter notes G4, A4, B4, C5, D5, E5, F5, G5, followed by quarter notes G4, A4, B4, C5, D5, E5, F5, G5.

13



Musical notation for section 13, starting with a treble clef and a 4/4 time signature. The melody consists of quarter notes G4, A4, B4, C5, D5, E5, F5, G5, followed by quarter notes G4, A4, B4, C5, D5, E5, F5, G5. The section concludes with a first ending (1.) and a second ending (2.) leading to a double bar line.

18 **B**



Musical notation for section B, starting with a treble clef and a 4/4 time signature. The melody consists of quarter notes G4, A4, B4, C5, D5, E5, F5, G5, followed by quarter notes G4, A4, B4, C5, D5, E5, F5, G5.

22



Musical notation for section 22, starting with a treble clef and a 4/4 time signature. The melody consists of quarter notes G4, A4, B4, C5, D5, E5, F5, G5, followed by quarter notes G4, A4, B4, C5, D5, E5, F5, G5. The section concludes with a first ending (1.) and a second ending (2.) leading to a double bar line.

26



Musical notation for section 26, starting with a treble clef and a 4/4 time signature. The melody consists of quarter notes G4, A4, B4, C5, D5, E5, F5, G5, followed by quarter notes G4, A4, B4, C5, D5, E5, F5, G5. The section concludes with a first ending (1.) and a second ending (2.) leading to a double bar line.

30 **Bridge**



Musical notation for the Bridge section, starting with a treble clef and a 4/4 time signature. The melody consists of quarter notes G4, A4, B4, C5, D5, E5, F5, G5, followed by quarter notes G4, A4, B4, C5, D5, E5, F5, G5.

35 **A**



Musical notation for section A, starting with a treble clef and a 4/4 time signature. The melody consists of quarter notes G4, A4, B4, C5, D5, E5, F5, G5, followed by quarter notes G4, A4, B4, C5, D5, E5, F5, G5.

39 **[Pick Up Solo]**



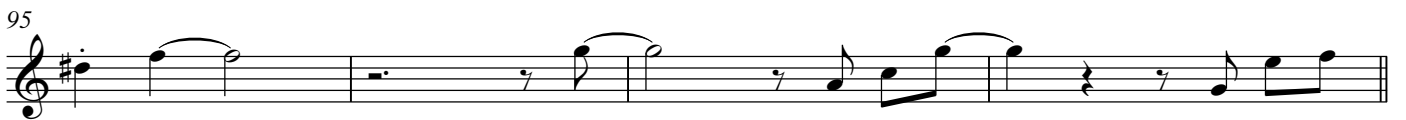
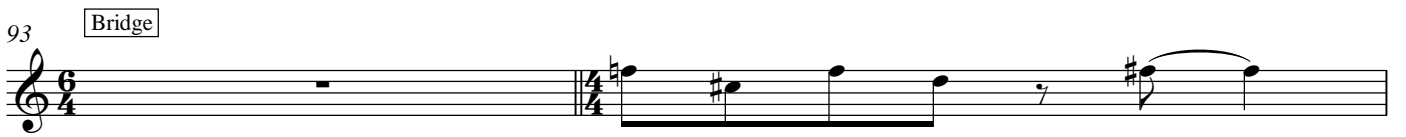
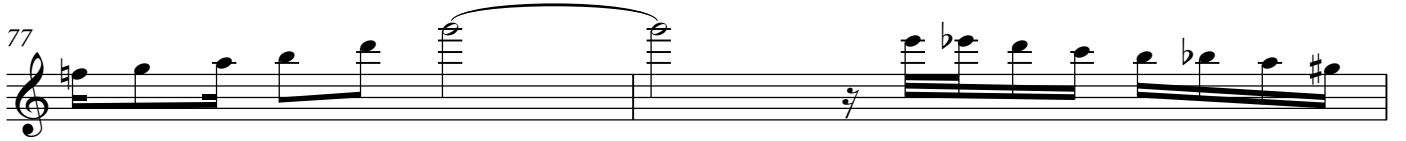
Musical notation for section 39, starting with a treble clef and a 4/4 time signature. The melody consists of quarter notes G4, A4, B4, C5, D5, E5, F5, G5, followed by quarter notes G4, A4, B4, C5, D5, E5, F5, G5.

42 **Solo**



Musical notation for the Solo section, starting with a treble clef and a 4/4 time signature. The melody consists of quarter notes G4, A4, B4, C5, D5, E5, F5, G5, followed by quarter notes G4, A4, B4, C5, D5, E5, F5, G5. The section concludes with a first ending (1.) and a second ending (2.) leading to a double bar line.

Musical score for a single melodic line, measures 44-71. The score is written on a single staff in treble clef. The key signature has one flat (B-flat). The time signature is 3/4. The music features a variety of rhythmic patterns, including eighth and sixteenth notes, and rests. Several measures contain triplets, indicated by a bracket with the number '3' above the notes. Measure 44 starts with a treble clef and a key signature of one flat. Measure 47 has a key signature change to two flats (B-flat and E-flat). Measure 49 has a key signature change to one flat (B-flat). Measure 52 has a key signature change to two flats (B-flat and E-flat). Measure 55 has a key signature change to one flat (B-flat). Measure 58 has a key signature change to two sharps (F# and C#). Measure 61 has a key signature change to one flat (B-flat). Measure 63 has a key signature change to two flats (B-flat and E-flat). Measure 65 has a key signature change to one flat (B-flat). Measure 67 has a key signature change to two flats (B-flat and E-flat). Measure 69 has a key signature change to one flat (B-flat). Measure 71 has a key signature change to two flats (B-flat and E-flat). The score ends with a double bar line in measure 71.



107 Solo

109

112

114

116

118

120

122

124

126

128

Detailed description: This page contains ten staves of musical notation for a solo section. The music is written in treble clef with a key signature of one flat (B-flat). The tempo is marked with a 'z' (zastava) symbol. The notation includes various rhythmic values such as eighth and sixteenth notes, and rests. There are several triplet markings (indicated by a '3' in a bracket) and a few slurs. The solo section begins at measure 107 and ends at measure 128.