

SINTERKLAASJE KOM MAAR BINNEN



SINTERKLAAS IS JARIG



ZIE DE MAAN SCHIJNT DOOR DE BOMEN



ZIE GINDS KOMT DE STOOMBOOT



HIJ KOMT, HIJ KOMT



DAAR WORDT AAN DE DEUR GEKLOPT



SINTERKLAAS DIE GOEIE HEER

Two staves of musical notation for the song 'Sinterklaas die goeie heer'. The first staff is in 2/4 time with a key signature of one flat (Bb). The second staff continues the melody and ends with a double bar line.

O, KOM ER EENS KIJKEN

WALS-TEMPO

Eight staves of musical notation for the song 'O, kom er eens kijken'. The music is in 3/4 time with a key signature of one sharp (F#). The notation includes various note values, rests, and a repeat sign with first and second endings.

NU ZIJT WELLEKOME



ER IS EEN KINDEKE



MIDDEN IN DE WINTERNACHT



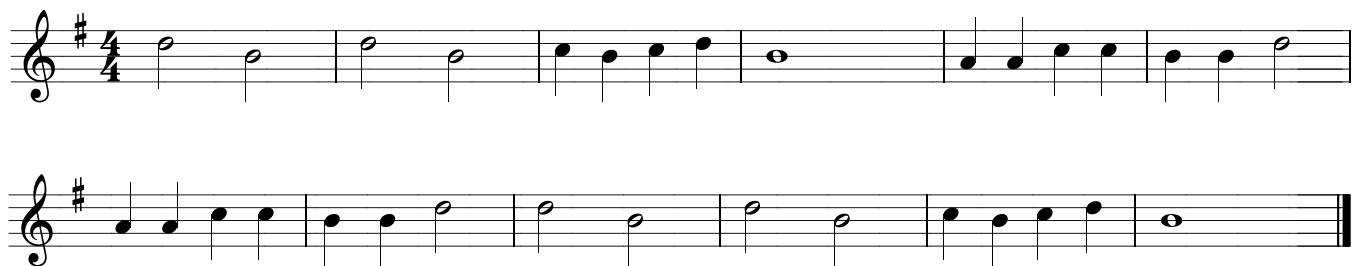
KOMT ALLEN TEZAMEN



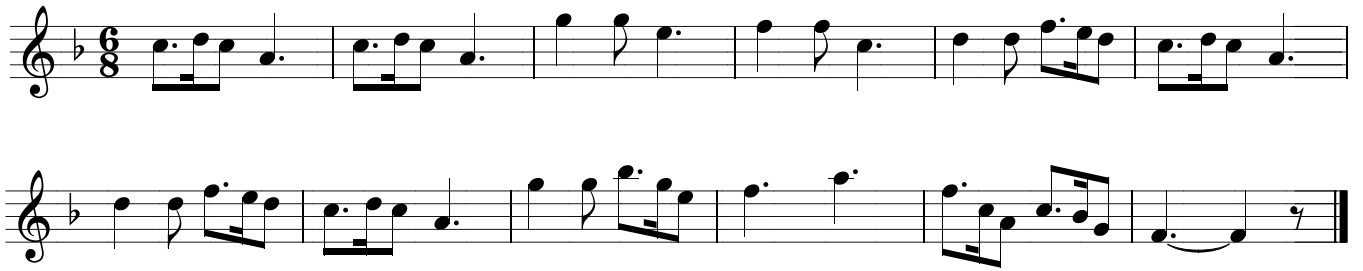
DE HERDERTJES LAGEN BIJ NACHTE



STIL MI



STILLE NACHT



LEISE RIESELT DER SCHNEE



OH SANCTISSIMA



RUDOLPH, THE REDNOSED REINDEER

Musical score for 'Rudolph, the Red-nosed Reindeer' in 4/4 time, key of B-flat major. The score consists of five staves of music. The melody is written in a single voice line. The first staff begins with a treble clef, a key signature of one flat (B-flat), and a 4/4 time signature. The melody starts on G4 and proceeds through various intervals, including eighth and sixteenth notes, and rests. The piece concludes with a double bar line.

WE WISH YOU A MERRY CHRISTMAS

Musical score for 'We Wish You a Merry Christmas' in 3/4 time, key of C major. The score consists of three staves of music. The melody is written in a single voice line. The first staff begins with a treble clef, a key signature of no sharps or flats (C major), and a 3/4 time signature. The melody starts on C4 and proceeds through various intervals, including eighth and sixteenth notes, and rests. The piece concludes with a double bar line.

JINGLE BELLS



Musical score for "Jingle Bells" in 4/4 time. The score consists of four staves of music. The first staff begins with a treble clef and a common time signature (C). The melody is written in a simple, rhythmic style with quarter and eighth notes, and rests. The second staff continues the melody. The third and fourth staves provide a harmonic accompaniment with a steady eighth-note pattern.

MARY'S BOY CHILD



Musical score for "Mary's Boy Child" in 4/4 time. The score consists of four staves of music. The first staff begins with a treble clef and a 4/4 time signature. The melody is written in a simple, rhythmic style with quarter and eighth notes, and rests. The second staff continues the melody. The third and fourth staves provide a harmonic accompaniment with a steady eighth-note pattern.