

# GIRL FROM IPANEMA

BOB MAIZE 1981

A.C. Jobim

1 T A1

Fmaj7 G7

Gm7 C7 Fmaj7 C7(b5)

A2

Fmaj7

B

F#maj7 B7

F#m7 D7

Gm7 Bbm7 Eb7

Am7 D7 Gm7 C7

A3

Fmaj7 C7(b5)

2 A1

Two staves of musical notation in bass clef, 8/8 time signature, and a key signature of one flat (B-flat). The first staff contains measures 1-4. The second staff contains measures 5-8. The music features a mix of quarter, eighth, and dotted notes.

A2

Two staves of musical notation in bass clef, 8/8 time signature, and a key signature of one flat. The first staff contains measures 9-12. The second staff contains measures 13-16. The music continues with quarter and eighth notes, including some beamed eighth notes.

B

Four staves of musical notation in bass clef, 8/8 time signature, and a key signature of one flat. The first two staves contain measures 17-20. The last two staves contain measures 21-24. This section includes more complex rhythmic patterns with sixteenth notes and eighth notes.

A3

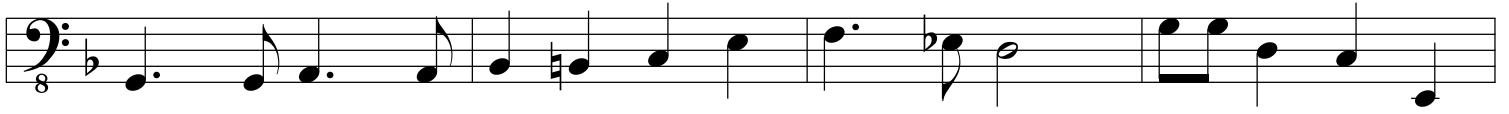
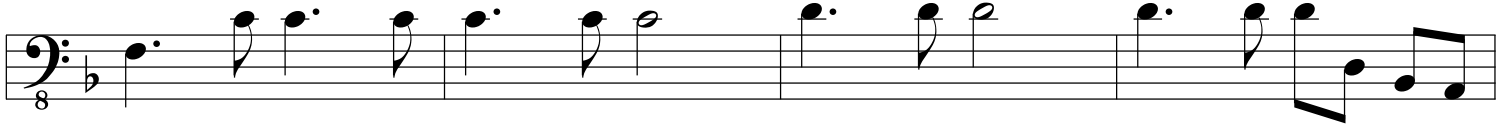
Two staves of musical notation in bass clef, 8/8 time signature, and a key signature of one flat. The first staff contains measures 25-28. The second staff contains measures 29-32. The music concludes with a final cadence.

A2

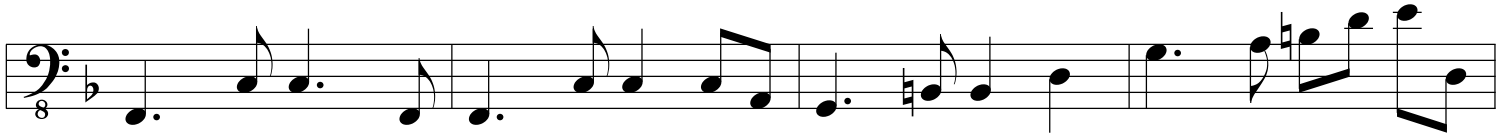
B

A3

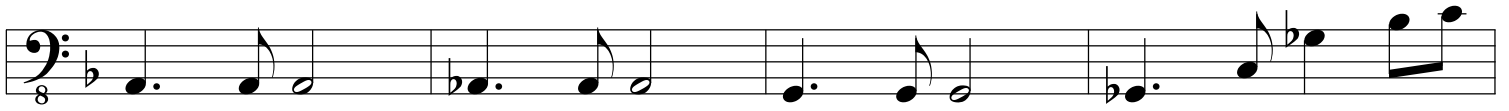
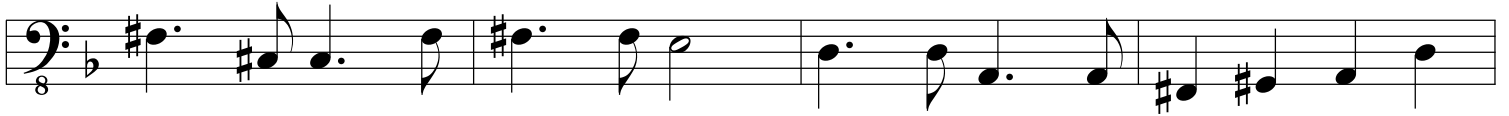
## 4 A1



## A2



## B



## A3

