

WISHIN' ON A STAR

Tekst & muziek: BILLIE CALVIN

Moderately slow

mp

Fm7 Em7

I'm wish - in' on — a star to fol - low where you

Detailed description: This system contains the first two staves of music. The top staff is the vocal line in 4/4 time, starting with a treble clef and a key signature of three flats (B-flat major/D-flat minor). The lyrics are "I'm wish - in' on — a star to fol - low where you". The bottom staff is the piano accompaniment, starting with a treble clef and a key signature of three flats. It includes a piano dynamic marking "mp". Handwritten guitar chord diagrams for Fm7 and Em7 are shown above the vocal staff.

Bbm7 Am7 Fm7 Em7

are. — I'm wish - in' on — a dream

Detailed description: This system contains the next two staves of music. The top staff continues the vocal line with the lyrics "are. — I'm wish - in' on — a dream". The bottom staff continues the piano accompaniment. Handwritten guitar chord diagrams for Bbm7, Am7, Fm7, and Em7 are shown above the vocal staff.

Bbm7 Am7

to fol - low what it means. — I'm wish - in' on — a

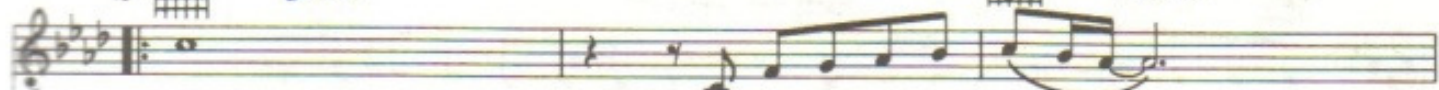
Detailed description: This system contains the final two staves of music. The top staff continues the vocal line with the lyrics "to fol - low what it means. — I'm wish - in' on — a". The bottom staff continues the piano accompaniment. Handwritten guitar chord diagrams for Bbm7 and Am7 are shown above the vocal staff.



Em7



Am7



star
see
star

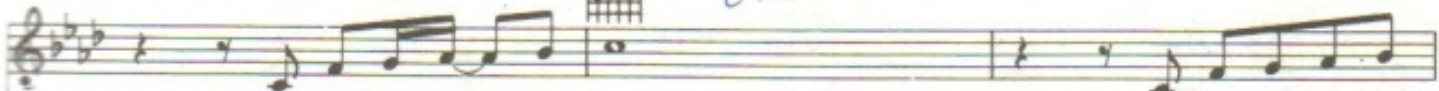
to fol - low where you are. _____
a time when you would be _____
to fol - low where you are. _____



mf



Em7

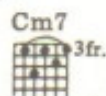


I'm wish-in' on _____ a dream
so far a - way _____ from home,
I'm wish-in' on _____ a dream

to fol - low what it
so far a - way from
to fol - low what it



Am7

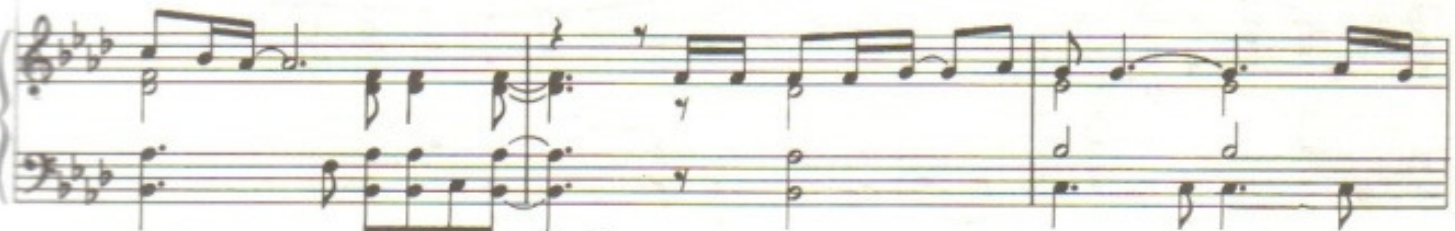


Bm7



means. _____
me. _____
means. _____

And I wish on all _____ the rain - bows _____ that I
Just think of all _____ the mo - ments _____ that we've
And I wish on all _____ the rain - bows _____ that I



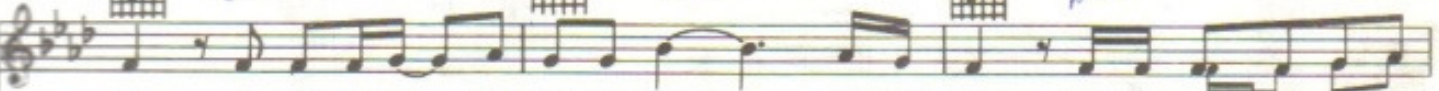
Am7



Bm7



Am7



sec. I wish on all _____ the peo - ple who _____ real - ly dream. And I'm wish - in' on to -
spent. I just can't let _____ you go from me; _____ you were meant. And I did - n't mean to
sec. I wish on all _____ the peo - ple we'd _____ ev - er be. And I'm hop-in' on all the



Cm7

3fr.

Bm7

Bbm7

Am7

Cm7

3fr.

Bm7

To Coda

mor-row; pray it— nev-er comes. And I'm wish-in' on all the lov-in' we've— ev-er
hurt you, but I know that in the game of love you reap— what you
days to come—and days to go. And I'm hop-in' on days of lov-in' you—

1. Bbm7

Am7

2. Bbm7

Am7

Bbm7

Am7

done. I nev-er thought I'd sow. I feel it's time we should make.

Cm7

3fr.

Bm7

Bbm7

Am7

Cm7

3fr.

Bm7

— up, ba-by. I feel it's time for us to get back to-gether and

Bbm7

Am7

Cm7

3fr.

Bm7

Bbm7

Am7

Cm7

3fr.

Bm7

make the best of things, oh ba-by, when we're to-gether; wheth-er or nev-er.

Bb m7

Am7

Cm7

3fr.

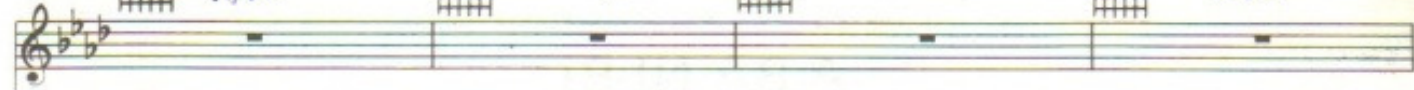
Bm7

Bb m7

Am7

Db/Eb

Cm



D.S. al Coda

Coda

Repeat and fade

Bb m7

Am7

Fm7

Em7



I'm wish-in' on a



so.

I'm wish-in' on a star



Repeat and fade

Bb m7

Am7

Fm7

Em7

Bb m7

Am7



to fol - low where you are.

I'm



Fm7

Em7

Bb m7

Am7

Cm7

3fr.

Bm7

Bb m7

Am7



wish-in' on a star.

And I wish on all the rain-bows

that I see.

I'm

