



Daniel Froehling

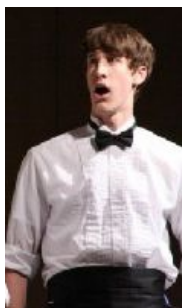
Arranger, Composer, Director

United States (USA), Rochester MN

About the artist

Hello my name is Daniel Froehling and I am currently a Senior at Century High School. I am the director of Men of The Century, a Men's Acappella Group at the school. I'm a Bass Two (the best section by far). I've always enjoyed singing, and writing sheet music is only taking the experience to another level. I hope you enjoy what you hear, and feel free to use the music however you want.

About the piece



Title: A Romanian Tragedy
Composer: Daniel Froehling
Arranger: Daniel Froehling
Licence: Public Domain
Publisher: Daniel Froehling
Instrumentation: Choral TTBB a cappella
Style: A cappella
Comment: I wrote this piece as a sort of comedy thingy. It's supposed to be sung with a very serious tone, but with very silly words. I was inspired by Tim Jones of Moosebutter. Have fun!

Daniel Froehling on [free-scores.com](http://www.free-scores.com)

<http://www.free-scores.com/Download-PDF-Sheet-Music-daniel-froehling.htm>

- Download other works by this artist
- Listen to his pieces
- Contact the artist
- Write feedback comments
- Share your mp3 recording of this piece

A Romanian Tragedy

For the Want of Chocolate

Daniel Froehling

Musical score for the first system, featuring four vocal parts: Tenor 1, Tenor 2, Baritone, and Bass. The music is in 4/4 time and begins with a piano dynamic. The lyrics are as follows:

Tenor 1: In Deep / There Was / Ro-man-i-a - / Ah

Tenor 2: In Deep / There Was / Ro-man-i-a - / Ah

Baritone: In Deep / There Was / Ro-man-i-a / A Sma-ll Boy / Ah

Bass: In Deep / There Was / Ro-man-i-a / A Sma-ll Boy / He Long -

The Baritone part includes a *mf* dynamic marking at the end of the first phrase.

Musical score for the second system, featuring four vocal parts: Tenor 1, Tenor 2, Baritone, and Bass. The music continues with a piano dynamic. The lyrics are as follows:

T. 1: In-deed In-deed

T. 2: In-deed In-deed

Bar.: In-deed In-deed

B.: ed - For A Bar Of Cho-co-late / In-deed

The Tenor 1, Tenor 2, and Baritone parts include a *mp* dynamic marking at the start of the second phrase.

7

T. *mf*
8 With Nuts In It Da da da da da da! There Was

T. *mf*
8 With Nuts In It Ah

Bar. *mf*
With Nuts In It Ah

B. *mf*
With Nuts In it Ah

10

T. *mf*
8 No Cho - co - late to be Spared In-deed -

T. *p*
8 In - deed In - deed

Bar. *p*
In - deed In - deed

B. *p*
In - deed In - deed No

13

T. 8 Cho-co-late Cho-co-late Cho-co-late!! For the Love of Cho-co-late

T. 8 Cho co-late Cho-co-late Cho-co-late!! For the Love of Cho-co-late

Bar. 8 Cho-co-late Cho-co-late Cho-co-late!! For the Love of Cho-co-late

B. 8 Cho-co-late Cho-co-late Cho-co-late!! For the Love of Cho-co-late