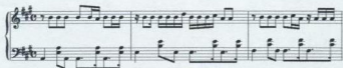


# 開不了口

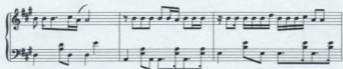
詞：徐若瑩

曲：周杰倫

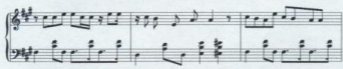
唱：周杰倫



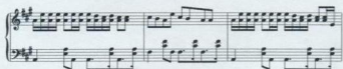
Printed by an Evaluation Copy of MOZART



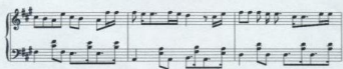
Printed by an Evaluation Copy of MOZART



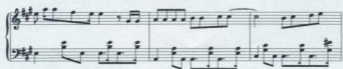
Printed by an Evaluation Copy of MOZART



Printed by an Evaluation Copy of MOZART



Printed by an Evaluation Copy of MOZART



Printed by an Evaluation Copy of MOZART

B1

First system of a piano score in G major, 3/4 time. The right hand plays a melody of eighth notes, and the left hand plays a bass line of eighth notes.

Printed by an Evaluation Copy of MOZART

Second system of the piano score. The right hand continues the melody with eighth notes, and the left hand provides harmonic support with eighth notes.

Printed by an Evaluation Copy of MOZART

Third system of the piano score. The right hand melody continues, and the left hand accompaniment remains consistent.

Printed by an Evaluation Copy of MOZART

Fourth system of the piano score. The right hand melody continues, and the left hand accompaniment remains consistent.

Printed by an Evaluation Copy of MOZART

Fifth system of the piano score. The right hand melody continues, and the left hand accompaniment remains consistent.

Printed by an Evaluation Copy of MOZART

Sixth system of the piano score. The right hand melody continues, and the left hand accompaniment remains consistent.

Printed by an Evaluation Copy of MOZART

First system of a piano piece. The right hand features a melodic line with a long note at the start, while the left hand plays a steady accompaniment of chords.

Printed by an Evaluation Copy of MOZART

Second system of the piano piece. The right hand continues the melodic line with more rhythmic activity, and the left hand maintains the chordal accompaniment.

Printed by an Evaluation Copy of MOZART

Third system of the piano piece. The right hand has a more complex texture with some sixteenth-note passages, while the left hand continues with chords.

Printed by an Evaluation Copy of MOZART

Fourth system of the piano piece. The right hand features a melodic line with some grace notes, and the left hand continues with the accompaniment.

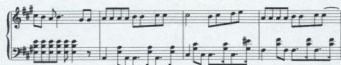
Printed by an Evaluation Copy of MOZART

Fifth system of the piano piece. The right hand has a melodic line with some rests, and the left hand continues with the accompaniment.

Printed by an Evaluation Copy of MOZART

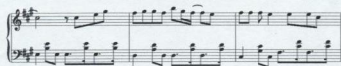
Sixth system of the piano piece. The right hand has a melodic line with some sixteenth-note passages, and the left hand continues with the accompaniment.

Printed by an Evaluation Copy of MOZART



Musical score system 1, featuring a treble and bass clef staff with a key signature of two sharps (F# and C#) and a 3/4 time signature. The treble staff contains a melodic line with eighth and sixteenth notes, while the bass staff provides a harmonic accompaniment with chords and moving lines.

Printed by an Evaluation Copy of MOZART



Musical score system 2, continuing the piece with similar melodic and harmonic textures in the treble and bass staves.

Printed by an Evaluation Copy of MOZART



Musical score system 3, showing further development of the musical themes.

Printed by an Evaluation Copy of MOZART



Musical score system 4, featuring a more active bass line with frequent chord changes.

Printed by an Evaluation Copy of MOZART



Musical score system 5, consisting of a final cadence with sustained chords in both the treble and bass staves.

Printed by an Evaluation Copy of MOZART