



2009 Drumline Audition Packet

University of Hawaii

Rainbow Warrior Marching Band

**Innovative
Percussion[®]
Inc.**



Aloha

Mahalo for your interest in the University of Hawaii Rainbow Warrior Marching Band Drumline. In this packet you will find information about the 2009 Drumline Auditions.

Coming from one of the most beautiful places on Earth, the University of Hawaii Drumline has one of the most unique styles in the country. Here, we blend styles not only from DCI and other college drumlines, but are also heavily influenced by Hip Hop, Funk, Rock, Latin, and anything else that will make you “bob your head”. All of this combines into one of the most entertaining College Drumlines to see and hear.

The University of Hawaii Drumline strives each year to reach our goal of excellence in performance. However, this goal is not easily met. Being a member of the drumline requires a strong dedication to work, and trustworthiness to be personally accountable for your responsibilities. Three weeks in to the season our members have memorized an extensive exercise packet, numerous stand grooves, the pregame show and fight songs. On top of this, there is brand new show music and drill for almost every home game. Being a member in the UH Drumline takes a lot of discipline, hard work and time commitment, but it is also a very fun and rewarding experience.

If you have any questions, please contact UH Bands at 808-956-7657.

Sincerely,

Keith Higaki
Marching Band Director
keith.higaki@hawaii.edu
808-956-8091

Gwen Nakamura
Assistant Band Director
gwenn@hawaii.edu
808-956-7657

Galutau Aga
Drumline Instructor
galutau@hawaii.edu
808-741-9379

www.uhband.hawaii.edu

Drumline Workshops

These workshops give you a chance to familiarize yourself with the audition music, find out more about the audition process, learn the UH Drumline technique and build chops. It is also a good chance to get to meet new people and make new friends. While the workshops are not mandatory, coming to a workshop can only help you in the audition process. All rehearsals are on Monday nights 6pm – 8pm and are held at the UH Bandroom.

May 11

June 1

June 15

June 29

July 13

July 29

What to Expect

Here are a few things to consider before coming to auditions.

Be prepared. Practice the audition music and have it learned by Auditions. Having it memorized is even better.

Bring your music in a binder. Coming in organized and prepared will go a long way when audition results are being tallied.

Bring your own sticks for auditions. It doesn't matter what you use as long as they are marching sticks. We'll have bass drum mallets for you to use during the bass drum auditions.

If you want to be part of the section, come and audition. We'll find the spot that fits you best. As long as you are willing to work hard, I am sure we can find you a spot in the drumline. If not, there are also other opportunities within the Marching Band that you can be a part of.

All rehearsals after Auditions are mandatory. Please make all necessary arrangements to be there for all Drum Camp and Band Camp rehearsals. Work is not a valid excuse for missing rehearsals. Check the band website for information about Band Camp and Drum Camp rehearsal dates and times.

www.uhband.hawaii.edu

Auditions

Friday, August 14
3pm – 6pm

Snare Audition	3:00pm – 3:45pm
Tenor Audition	3:50pm – 4:35pm
Bass Audition	4:40pm – 5:25pm
Cymbal Auditions	5:30pm – 6:00pm
Dinner Break (on your own)	6:00pm – 7:00pm

*** Results will be posted after the dinner break at 7:00pm. A meeting for all drumline members will follow the posting of the results.

Please have the audition music prepared for auditions.

We will have group auditions for the Snare, Tenor and Bass sections. Everyone auditioning for these sections will play together during their specified times. We'll rotate people in and out on the line making sure everyone has a chance to play on the drum.

Cymbal auditions will be individual and will be based on a sight-reading piece. Everyone will sight-read two pieces, a snare drum piece and a cymbal piece.

If you audition for one section, you may be placed in a different section based on audition results. You can audition for multiple sections.

Any other questions or concerns please email or call

Galutau Aga
Drumline Instructor
808.741.9379
galutau@hawaii.edu

Good Luck!



2009 University of Hawaii Drum Camp Schedule

Saturday August 15	9am – 5pm
Sunday August 16*	9am – 3pm
Monday August 17*	9am – 3pm
Tuesday August 18*	9am – 3pm
Wednesday August 19*	9am – 3pm
Thursday August 20*	9am – 3pm
Friday August 21	9am – 5pm
Sunday August 23*	12pm – 3pm

* - denotes Band Camp Rehearsal to follow

Snare

2009 University of Hawaii Drumline Audition Packet

Basics

4/4

r r r r r r r r l l l l l l l l r r r r r r r r l l l l l l l l r r r r r r r r

6

r r r r r r r r l l l l l l l l l l l l l l l l r r r r r r r r r r r r r r r r r r

11

r r r r r r r r r r r r r r r r l

16

One Hand

l l l l l l l l r R r R r R r R r R r r R R R R L l L l L l L l L l L L L L L

5

mf R r r R r R r R r r R r R r R r R r R r R r R r R r R r R r l L l l L l L l

10

L l l L l l L l L l L l L l L l L l L l L l *f* r r R r r r R r r r R r r r R r

15

r r R r r r R r r r R r r r R r l l L l l l L l l l L l l l L l l l L l l l L l

20

l l L l l l L l *ff* r r r R r r r r r r r R r r R r R r r R r r r r R r r r R R R R

25

l l l l L l l l l l l l L l l L l l L l l l l l l l L l l l L L L L R

Snare

68

R R L R R L R R L R r l r L L L r l r L L L > 3 3 3 3

72

R R L R R L R R L R r l r L L L r l r L L L r l r L L L

76

r l r l r l r l r l r r l r L L L

78

r l r L L L R L R L I R I R I R

Tenor

2009 University of Hawaii Drumline Audition Packet

Basics

1
r r r r r r r r l l l l l l l l r r r r r r r r l l l l l l l l r r r r r r r r

6
r r r r r r r r l l l l l l l l l l l l l l l l r r r r r r r r r r r r r r r r r r r

11
r r r r r r r r r r r r r r r r l

One Hand

16
l l l l l l l l l r R r R r R r R r R r r R r r R r L l L l L l L l

4
L l l L l l L l *mf* b R r B r R r R r R b l R r L R B R b R r B r R r R L r B r L R L B

9
L b L l B l L b L l L b r L l R L B L b L l B l L b L R l B l R L R B *f* R r r R r r r R

14
r r r R r r R R L l l L l l L l l l L L L L L l l l l l l l l l l l l l l l l l l l

19
R r r R r r R r r r R R R R *ff* r r r B r R r r R r r B r r R r r R r B R r r

24
R r r R R R R R L l l L B l l l l l l l B l

Tim E

29 
 R r l r l r r r r r l r l r l r l r l r l r l r l r l r l r l r l

33 
 r l r l r l r l r l r l r l r l l l l r l r l r l r l r l r l r l r l r l r l

37 
 l r l l r l l r l l r l r l r l r l r l r l r l r l r l r l r l r l r l r l

41 
 r l r l r l r l r l r l r l r l r l r l

Mississippi Diddles

45 
 1 2
 R l r L r l R l r L r l R l r L

4 
 R l r L r l R l r L r l R l r L R l R l r L r l R l R l r L r l r l r l r l r l r l

7 
 R l R l r L r l R l R l r L r l r l r l r l r l r l r l r l R l R l r L r l R l R l r L r l

10 
 r l r l r l r l r l r l r l R l R l r L r l R l R l r L r l r l r l r l r l r l r l r l r

14 
 2 3
 sol^o R R R R R r l r l R l r l r l r l r l r l r l r l R l r l r l r l r l r l

19 
 r l r l R l r l r l r l r l r l r l r l r l r l r l r l r l r l r l r

Easy Spree

22 

25 

29 

R r L l R r L l R r L l

R l L r R l L r R l L r

32 

R

R r l R r l R r l R r l R r l R r l R l r L r l R l r L r l

Coed

35 

r l r l r l r l r l r l R l r L r l R l r L r l r l r l r l r l r

r r l r l r l

40 

r r l r l r l r r l r l r l r l r l r l r l r l r l r l r l R R L R R L R R L R

45 

r r l r l r l r l r l r l r l

R R L R R L R R L R r l r l r l r l

50 

r r l r l r l r l r l r l r l r l r l r l r l r l r l r l r l B B r l r l r l r l

54 

r r l r l r l r l r l r l r l r l r l r l r l r l r l r l r l

8

65

r r l r l r l r l r r l r l r l r l r l r l r l r l R R L R R L R R L R r r l r l r l r l r l

70

r r l r l r l r l r R R L R R L R R L R r r l r l r l r l r l r r l r l r l r l r l

75

r r l r l r l r l r l r l r l r l r l r l r l r l B B r r l r l r l r l r l r l

78

r r l r l r l r l r l r l r l r l r l r l r l r l I R I R I R

2009 University of Hawaii Drumline Audition Packet

Basics

4/4

r r r r r r r r l l l l l l l l r r r r r r r r l l l l l l l l r r r r r r r r

6

l l l l l l l l r r r r r r r r l l l l l l l l ones, twos, threes, fours, anykine

11

16

One Hand

r R r R r R r R r R R r R R r R l L l L l L l L

4

l L l L l L l L **mf** r r R r r R r R r r R r r R r R R r R r R R r R R r R r R R r

9

L l l L l l L l L l l L l l L l L l l L l l L l L l l L l L **f** R r r R r R r R

14

R R r R r R r R R R r R r R r R R R r R r R r R L L l L l L l L L L l L l L l L

19

L L l L l L l L L L l L l L l L **ff** r r R r r R r R R r R r R R r r R r r R R r r

24

R r r R R R R L l l L l l L l L L l L l L l L l l L l l L l l L l l L L L R

Tim E

30



r l r l r r r r r l r r l r r l r r l r r l r l r l r l r l r l

33



r r l r r l r r l r r l r l r l r l l l l l r l l r l l r l l r l

36

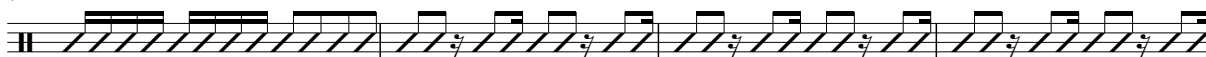


r l r l r l r l r l r l r l r l r l l r l l r l l

39



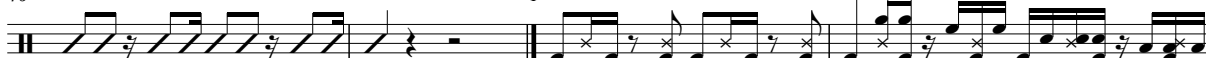
42



r l r l r l r l r l r l r r l l r r l l r r l l r r l l r r l l r r l l

Mississippi Diddles

46



r r l l r r l l r r l r b r l r b

3



6



9



12



r r l r r l l l r r l r r l r r l l l r r l

15

r r l r r l l l r r l r r l r r l l l r r l r r l r r l l l r r l

18

r r l r r l l l r r l r r l r r l l l r r l r r l r r l l l r r l r

22 Easy Spree

25

29

33

r l r l r l r l r l

Coed

37

43

47

51

54

Musical notation for bass line starting at measure 54. It features a series of sixteenth-note runs, followed by a measure with a double bar line and a fermata, and then a measure with a triplet of eighth notes and a final measure with a double bar line and a fermata.

59

Musical notation for bass line starting at measure 59. It includes a measure with a double bar line and a fermata, followed by a measure with a triplet of eighth notes, and then a series of sixteenth-note runs.

68

Musical notation for bass line starting at measure 68. It features a series of sixteenth-note runs, followed by a measure with a double bar line and a fermata, and then a series of triplet eighth notes.

72

Musical notation for bass line starting at measure 72. It features a series of sixteenth-note runs, followed by a measure with a double bar line and a fermata, and then a series of sixteenth-note runs.

76

Musical notation for bass line starting at measure 76. It features a series of sixteenth-note runs, followed by a measure with a double bar line and a fermata, and then a series of sixteenth-note runs.

78

Musical notation for bass line starting at measure 78. It features a series of sixteenth-note runs, followed by a measure with a double bar line and a fermata, and then a series of sixteenth-note runs with accents.