

Cold Shoulder

Words & Music by Adele Adkins

♩ = 112
N.C.

Am

Drums

L.H.

Em Am Em Am

1. You say it's all in my head, and the things I
(2.) days when I see you, — you make it

*1° R.H. tacet till**

Am Em Am

think just don't make sense. So where you been then? Don't go all
look like I'm see through. Do tell me why you waste our

Em

Am

Em



coy. Don't turn it round on me like it's my fault. See, I can
time when your heart ain't in it and you're not sat - is - fied. You know I



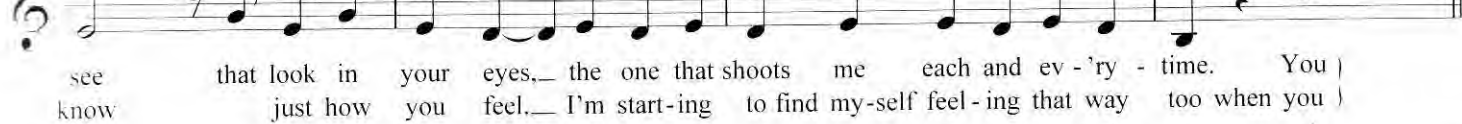
C

G

C

G

E/G#



see that look in your eyes, the one that shoots me each and ev - 'ry - time. You)
know just how you feel, I'm start - ing to find my - self feel - ing that way too when you)



Am

Em7

Am



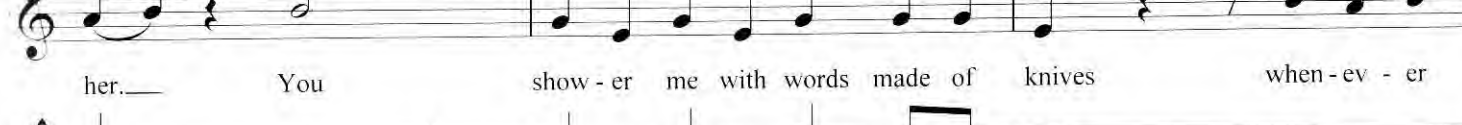
grace me with your cold shoul - der when - ev - er you look at me and wish I was



Em7

C

G



her. You show - er me with words made of knives when - ev - er



Am B7 1. Am Em

To Coda

you look at me and wish I was her.

Am Em C G#7

2. These Time and time a - gain I play the

G7 G# C G#7 G

role of fool just for you, and e - ven in the day-light when you're gam - ing, I don't see through.

C G#7 G7 G# C G#7

Try to look for things I hear but my eyes nev - er find. No, I don't know how you play..

3

G Am Em

You grace me with your cold shoul - der when - ev - er

Am Em C

you look at me and wish I was her. You show - er me with words made of

G Am B

knives. When - ev - er you look at me and wish I was her. You

D.S. al Coda

⊕ Coda Am Em Am Em Am