

INNOCENCE

Words and Music by AVRIL LAVIGNE
and EVAN TAUBENFELD

Moderately slow

C#m Amaj7 C#m

Wak - ing up, I see that
I found a place - so —

mp

Amaj7 C#m

ev - 'ry - thing is o - kay. } The first time in my
safe, — not a sin - gle tear. }

Amaj7 C#m

life, and now it's so { great.
clear. } Slow - ing down, I look a -
Feel — calm, — I be -

Amaj7



C#m



round and now I'm so a - mazed.
long, — I'm so hap - py here.

I think a - bout the
It's so — strong, and now I



Amaj7

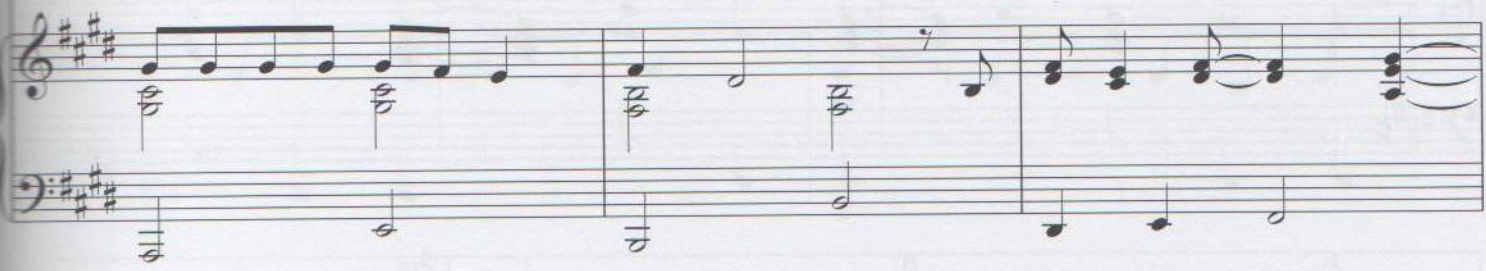


B



lit - tle things that make _ life great. — }
let my - self _ be _ sin - cere. — }

I would - n't change _ a —



Amaj7

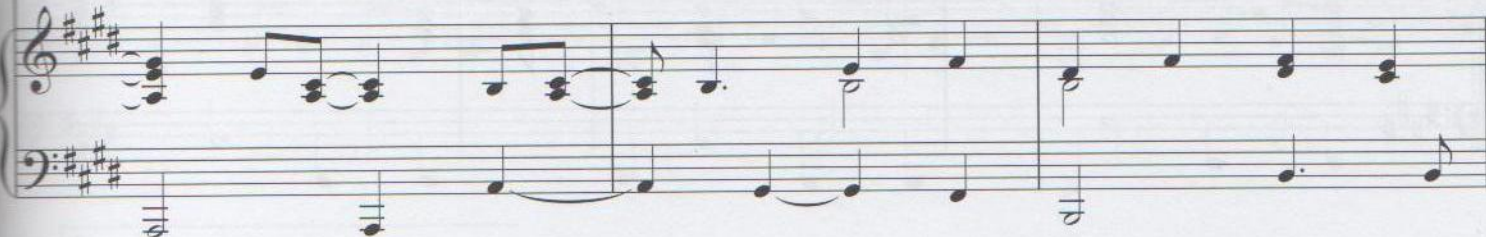


B



— thing — a - bout — it.

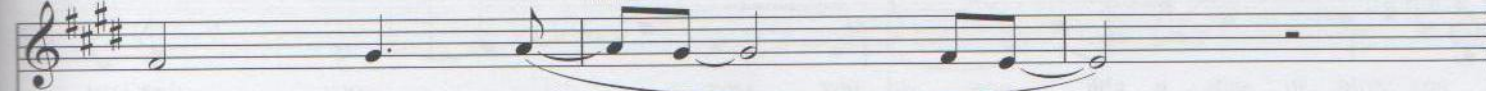
This is the



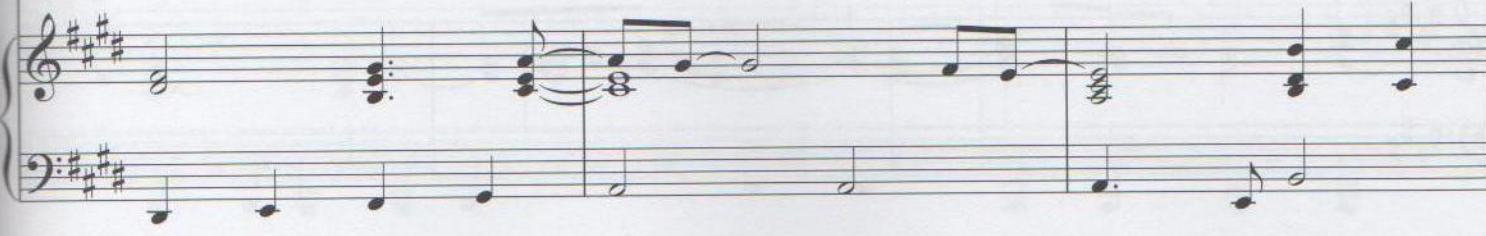
A



B



best feel - ing. —



C#m Amaj7 E

This in - no - cence — is bril - liant. — I

Detailed description: This system contains the first two staves of music. The top staff is the vocal line, and the bottom two staves are the piano accompaniment. The key signature has three sharps (F#, C#, G#). The guitar chord diagrams are: C#m (x02344), Amaj7 (x02023), and E (022100).

B C#m Amaj7

hope that it will stay. — This mo - ment is per - fect. —

Detailed description: This system contains the second two staves of music. The guitar chord diagrams are: B (x22202), C#m (x02344), and Amaj7 (x02023).

E B C#m

Please don't go a - way; — I need —

Detailed description: This system contains the third two staves of music. The guitar chord diagrams are: E (022100), B (x22202), and C#m (x02344).

A E B

— you — now, — and I'll

Detailed description: This system contains the final two staves of music. The guitar chord diagrams are: A (x02220), E (022100), and B (x22202).

Amaj7

1 B B(add4)

hold on - to it. Don't you



B C#m

let it pass — you by.

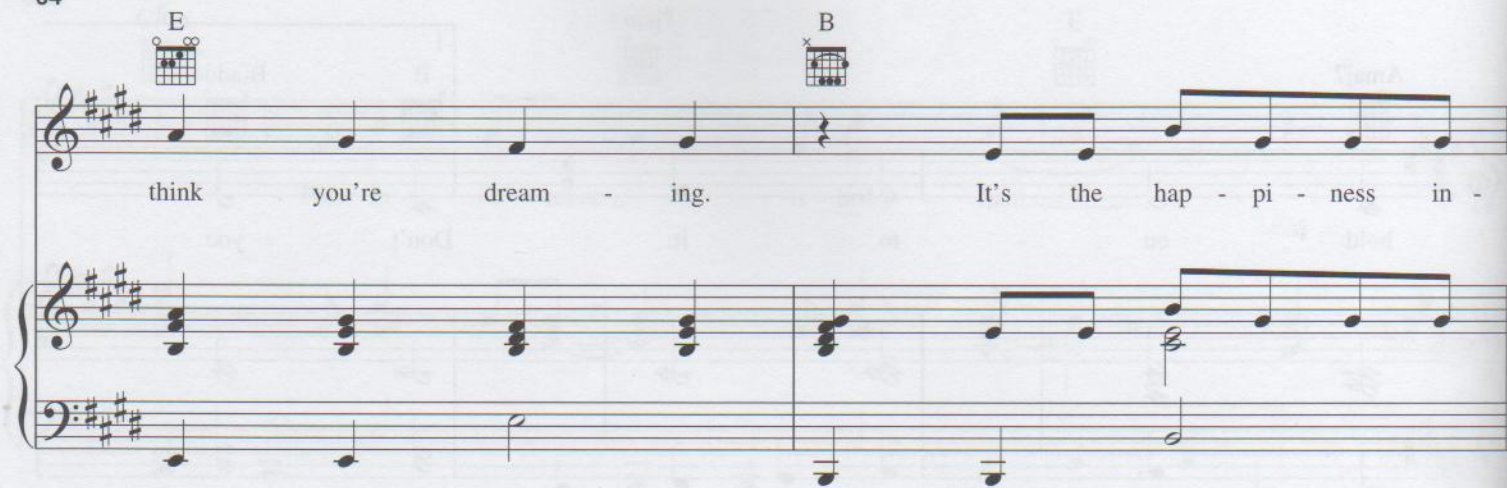
Amaj7 C#m Amaj7

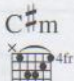


2 B7 Amaj7

Don't you let it pass — you by. — It's a state of bliss; you

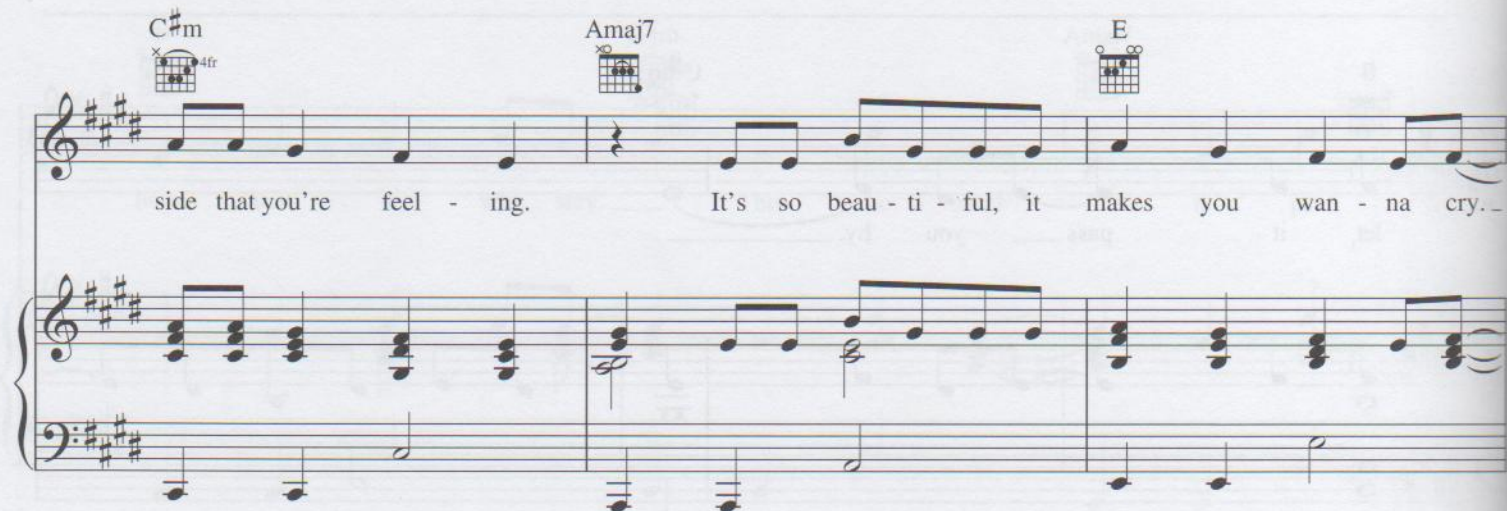
E  B 

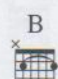

think you're dream - ing. It's the hap - pi - ness in -



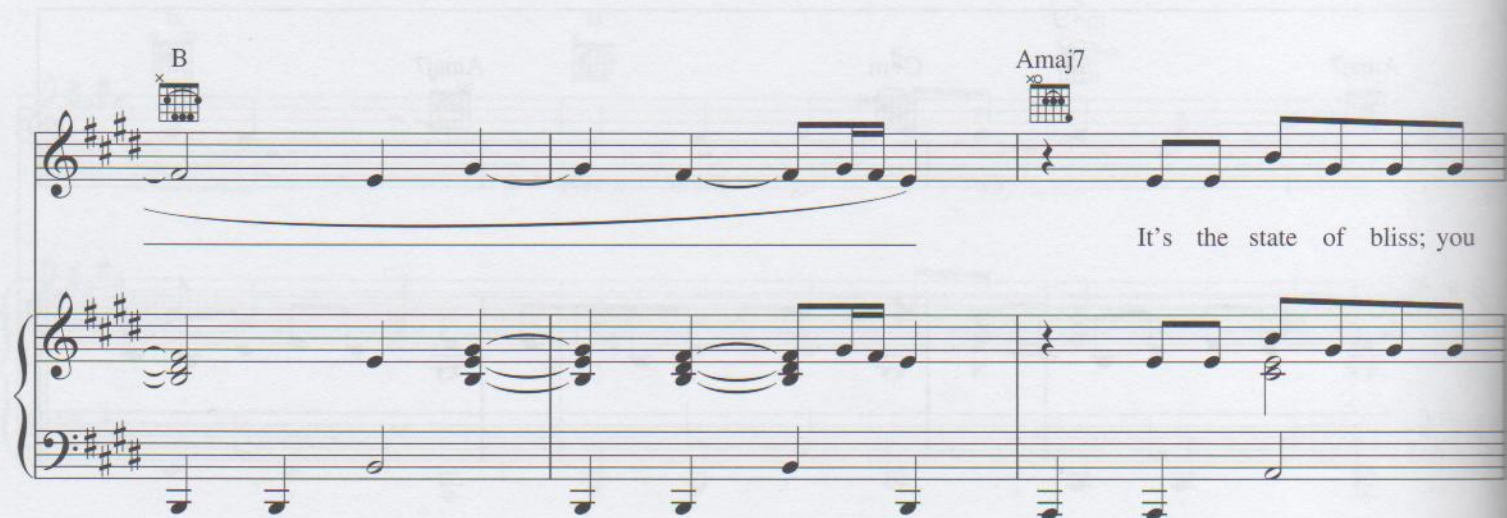
C#m  Amaj7  E 



side that you're feel - ing. It's so beau - ti - ful, it makes you wan - na cry..



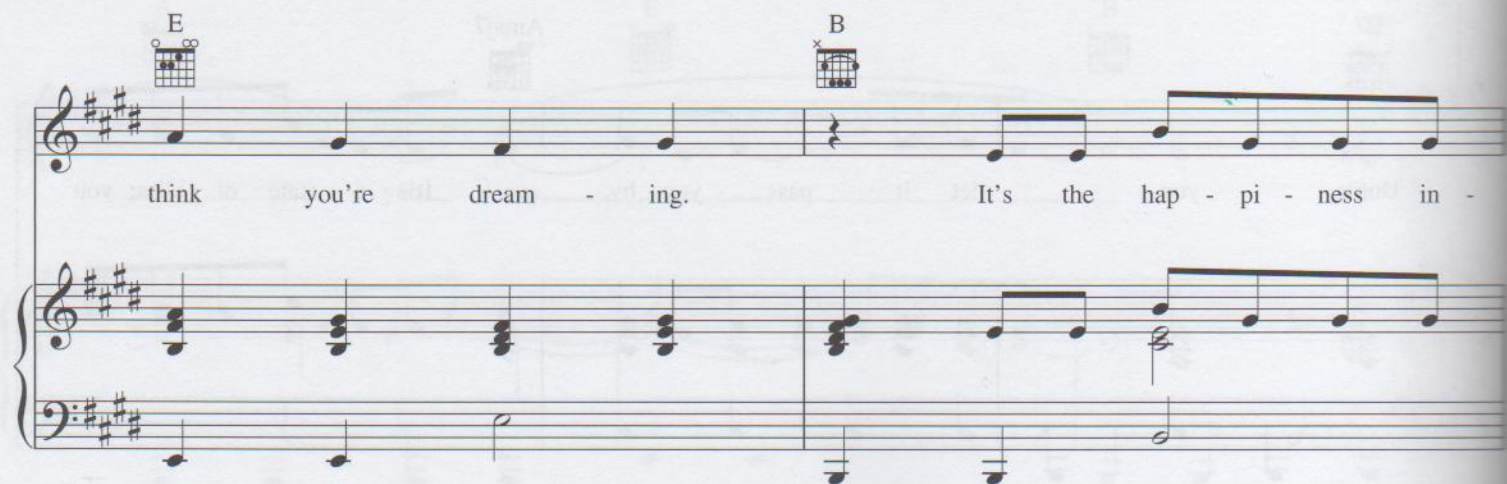
B  Amaj7 

It's the state of bliss; you



E  B 

think you're dream - ing. It's the hap - pi - ness in -





side that you're feel - ing. It's so beau - ti - ful, it



makes you wan - na cry.



(It's so beau - ti - ful, it makes you wan - na cry.) This in - no - cence



is bril - liant. (It makes me wan - na cry.)



This in - no - cence — is bril - liant. —



Please don't go a - way, — 'cause I need — you — now, —



and I'll hold on -



to it. Don't you let it pass — you by. —

I DON'T HAVE TO SAY

Chords: C, Amaj7, E

This in - no - cence is bril - liant. I

Chords: B, C#m, Amaj7

hope that it will stay. This mo - ment is per - fect.

Chords: E, B, C#m

Please don't go a - way. I need

Chords: A, E, B

you now, and I'll

Amaj7 B

hold on - to it. Don't you

This system contains the first two measures of the piece. The vocal line starts with a half note 'hold', followed by a quarter note 'on', a quarter rest, a quarter note 'to', a quarter note 'it.', a quarter rest, a quarter note 'Don't', and a quarter note 'you'. The piano accompaniment features a steady eighth-note bass line in the left hand and chords in the right hand.

C#m Amaj7

let it pass — you by. —

This system contains the next two measures. The vocal line continues with 'let it pass' (quarter note), a half rest, 'you by.' (quarter note), and a half rest. The piano accompaniment continues with eighth-note patterns in the left hand and chords in the right hand.

C#m Amaj7 C#m

This system contains the next two measures of piano accompaniment. The left hand continues with eighth-note patterns, and the right hand plays chords corresponding to the C#m, Amaj7, and C#m chord changes indicated above.

Amaj7 C#m Amaj9

rit.

This system contains the final two measures. The piano accompaniment features a *rit.* (ritardando) marking. The left hand has a half note chord, and the right hand has a half note chord. The system concludes with a final chord in the right hand.