

PEACEFUL EASY FEELING

Words and Music by
JACK TEMPCHIN

Moderately

E Esus4 E A

I like the way— your spar - klin' ear -

mf

Detailed description: This system contains the first two measures of the song. It features a vocal line with lyrics, a guitar line with four chords (E, Esus4, E, A), and a piano accompaniment. The piano part has a dynamic marking of *mf*. The key signature is two sharps (F# and C#) and the time signature is 4/4.

E A E A B

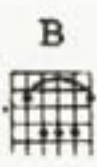
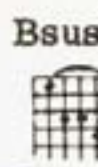
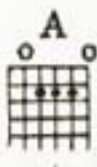
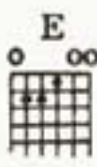
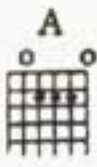
rings— lay a - gainst your skin — so — brown,

Detailed description: This system contains the next two measures. The vocal line continues with lyrics. The guitar line has five chords (E, A, E, A, B). The piano accompaniment continues with a consistent rhythmic pattern.

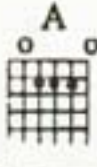
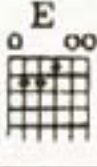
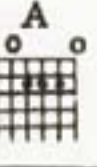
A E A E

and I wan - na sleep with you — in — the des - - ert — to - night.

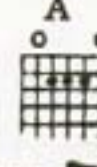
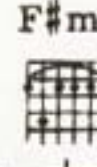
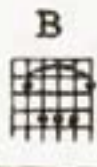
Detailed description: This system contains the final two measures of the song. The vocal line concludes with the lyrics. The guitar line has four chords (A, E, A, E). The piano accompaniment concludes with a final chord.



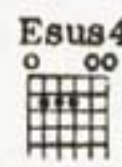
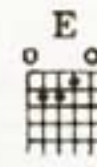
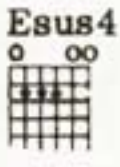
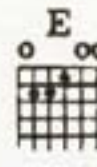
with a bil - lion stars all a - round. 'Cause I got a



peace - ful eas - y feel - in', and I know you won't.



let me down, 'cause I'm al - ready stand - in'



on the ground.

E A E A

And I found out a long_ time_ a - go_

Detailed description: This system contains the first four measures of the song. The guitar part features chords E, A, E, and A. The piano accompaniment consists of a rhythmic pattern in the right hand and a bass line in the left hand. The lyrics are 'And I found out a long_ time_ a - go_'. The melody is in the treble clef, and the piano part is in the grand staff.

E A B Bsus4 B Bsus4

what a wom-an can do_ to your_ soul,

Detailed description: This system contains the next four measures. The guitar part features chords E, A, B, Bsus4, B, and Bsus4. The piano accompaniment continues with the same rhythmic pattern. The lyrics are 'what a wom-an can do_ to your_ soul,'. The melody is in the treble clef, and the piano part is in the grand staff.

E A E A

ah, but she_ can't take you_ an - y - way,

Detailed description: This system contains the next four measures. The guitar part features chords E, A, E, and A. The piano accompaniment continues with the same rhythmic pattern. The lyrics are 'ah, but she_ can't take you_ an - y - way,'. The melody is in the treble clef, and the piano part is in the grand staff.

E A B

you don't al-read-y know_ how_ to go._ And I got a

Detailed description: This system contains the final four measures. The guitar part features chords E, A, and B. The piano accompaniment continues with the same rhythmic pattern. The lyrics are 'you don't al-read-y know_ how_ to go._ And I got a'. The melody is in the treble clef, and the piano part is in the grand staff.

A  **E** 

peace - ful eas - y feel - in',



A  **Bsus4**  2 fr. **B** 

and I know you won't let me down, 'cause I'm



E  **F#m7**  **A**  **Bsus4**  2 fr. *To Coda*

al - ready stand - in' on the ground.



E  **Esus4**  **E**  **Esus4** 



E A E A

I get this feel - in' I may know you

E A B

as a lov - er and a friend,

E A E A

but this voice keeps whis - per - ing in my oth - er ear, tells me

E A B Bsus4 2 fr. B

I may nev - er see you a - gain. 'Cause I get a

D.S. al Coda ⊕

Coda

Bsus4 2 fr. E F#m7 A Bsus4 2 fr. E

I'm al - read-y stand - in', yes, I'm al -

This system contains the first two staves of music. The top staff is a vocal line with lyrics. Above it are six guitar chord diagrams: Bsus4 2 fr., E, F#m7, A, Bsus4 2 fr., and E. The bottom two staves are piano accompaniment.

F#m7 A Bsus4 2 fr. E F#m7

read - y stand - in' on the ground.

This system contains the next two staves of music. The top staff is a vocal line. Above it are five guitar chord diagrams: F#m7, A, Bsus4 2 fr., E, and F#m7. The bottom two staves are piano accompaniment.

A B E F#m7 A

Whoa.

This system contains the next two staves of music. The top staff is a vocal line with the word "Whoa." and a long horizontal line indicating a sustained note. Above it are five guitar chord diagrams: A, B, E, F#m7, and A. The bottom two staves are piano accompaniment.

B E F#m7 A B E

rit.

This system contains the final two staves of music. The top staff is a vocal line with a long horizontal line. Above it are six guitar chord diagrams: B, E, F#m7, A, B, and E. The bottom two staves are piano accompaniment, with the instruction "rit." (ritardando) appearing in the right hand.