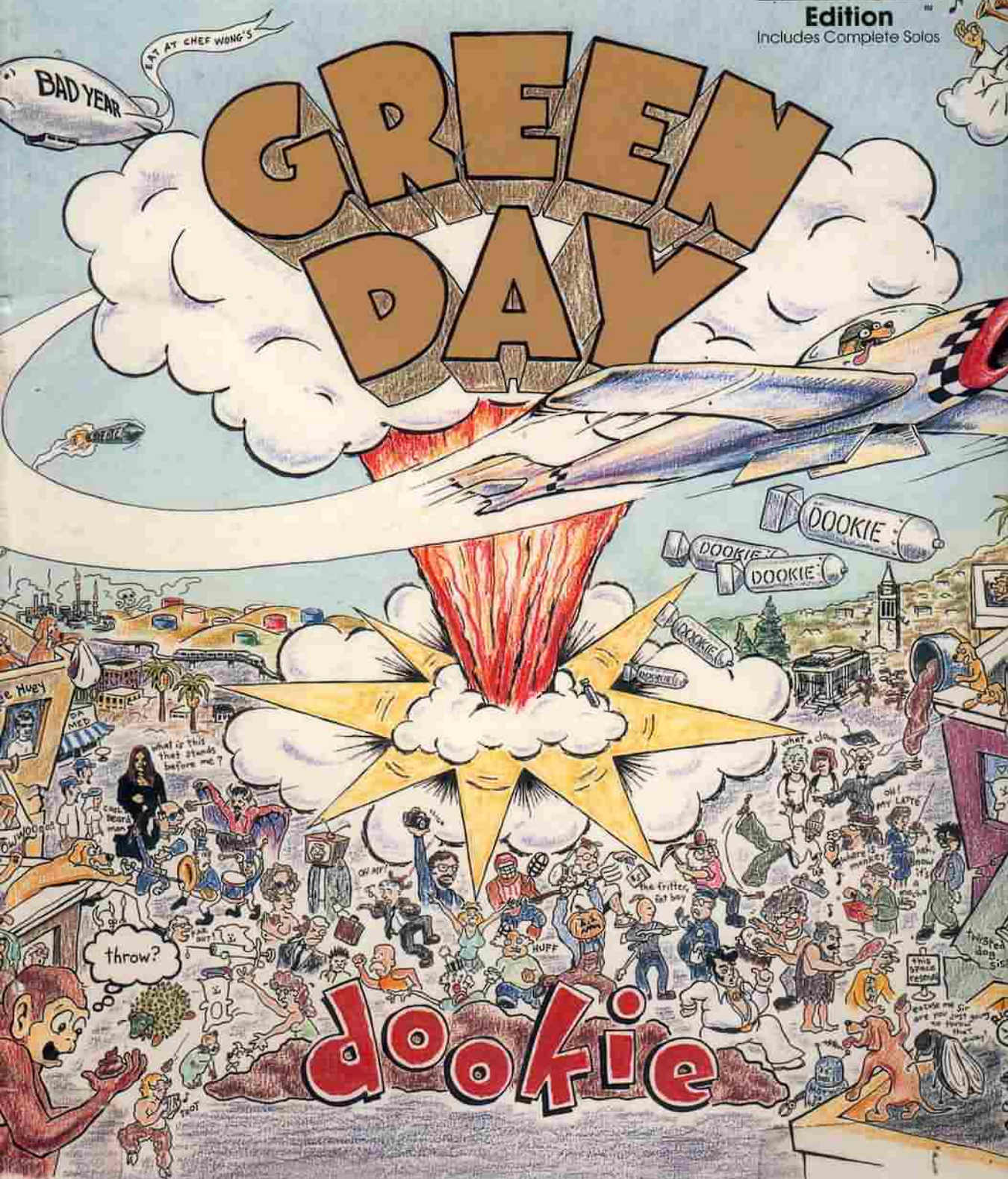


Authentic
GUITAR-TAB
Edition™
Includes Complete Solos



MONTREAL-NORD CBC HENRI-BOURASSA
780.8 GREE D AG L PM



00000006152926

6-152926



Burnout
 Having A Blast
 Chump
 Longueux
 Welcome To Paradise
 Pulling Teeth
 Basket Case
 She
 Sassafras Roots
 When I Come Around
 Coming Clean
 Emanuel Sleepus
 In the End
 F.O.D.
 All By Myself



WARNER BROS. PUBLICATIONS INC.
 15800 N.W. 48th Avenue • Miami, Florida 33014
 A Warner Music Group Company

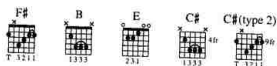


\$18.95
 In USA
 GF0663

BURNOUT

Words by
BILLIE JOE

Music by
BILLIE JOE,
TRÉ COOL and MIKE DIRNT



Verse: Rhy. Fig 1

Fast rock $\text{♩} = 176$
Drums

Gtr. 1

1. I de - clare I don't care — no more. —
2. See additional lyrics

I'm burn - ing up and out — and — grow - ing bored. — In my smoked

out bor - ing — room. My — (end Rhy. Fig. 1)

w/Rhy. Fig. 1 (Gtr. 1)

hair is shag - ging in — my eyes. — Drag - ging my feet to hit — the street — to - night —

— to drive a - long — these shit — town — lights.

Chorus: B

Gtr. 1

I'm not grow - ing — up. I'm — just burn - ing —

out and I stepped in line — to walk — a - mongst — the

dead. Oh _____

I'm not grow-ing up, I'm just burn-ing

out and I stepped in line to walk a-mongst the

dead. Dead. _____

To Coda \oplus
C#sus C#(type 2)

*Dead. _____

*First time only.

Drum Solo: *D.S. \mathcal{S}*
(take 2nd ending)
at Coda

Gtr. 1 F# E F# 1.2.3. || 4.

T	2	2	2	0	2
A	4	4	4	0	2
B	x	x	x	0	2
	2	2	2	0	2

\oplus Coda Gtr. 1 F# E F#

T	2	2	0	2
A	4	4	0	2
B	x	x	0	2
	2	2	0	2

Verse 2:
Apathy has rained on me.
Now, I'm feeling like a soggy dream.
So close to drowning, but I don't mind.
I've lived inside this mental cave.
Throw my emotions in the grave.
Hell, who needs them anyway?
(To Chorus:)

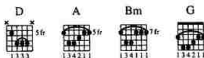
HAVING A BLAST

Words by
BILLIE JOE

Music by
BILLIE JOE,
TRÉ COOL and MIKE DIRNT

All gtrs. tune down 1/2 step:

- ⑥ = E♭ ③ = G♭
⑤ = A♭ ② = B♭
④ = D♭ ① = E♭



Fast rock ♩ = 176

Intro: *f* Gtr. 1 A G

Play 4 times
1/4
(last time) 7 1/4

TAB

Verse:

A5

1. tak - ing _____ all ____ you down _ with me. _
2. See additional lyrics

Rhy. Fig 1

P.M.

TAB

F#m G

Ex - plo-sives duct _ taped to ____ my spine, _

TAB

Bm E5 E A F#m

to an - oth - er time? Does it bring you so -

hold - - - - -

TAB

D5 A5 E5 N.C.

down that you thought you lost your mind?

pick. sl.

TAB

Verse:

F#m D A

Do you ev - er want to lead a long -

Rhy. Fig. 4

TAB

F#m G

trail of de - struc - tion and now down an - y bull -

TAB

Words by
BILLIE JOE

CHUMP

Music by
BILLIE JOE,
TRÉ COOL and MIKE DIRNT

All gtrs. tune down 1/2 step:

⑥ = E♭ ③ = G♭

⑤ = A♭ ② = B♭

④ = D♭ ① = E♭



Intro: Fast rock ♩ = 176

B A N.C. E B

Rhy. Fig. 1

Gr. 1

f

let ring

TAB

A N.C. E B

let ring

TAB

Verse: w/Rhy. Fig. 1 (Gr. 1, 2 times)

B A N.C. E B A N.C. E

don't know _ you, but I think _ I hate _ _ _ you. _

2. See additional lyrics

B A N.C. E F#

You're _ the rea - son for _ _ my mis - er - y. _

Rhy. Fig. 2

Gr. 1

hold

TAB

Bass Solo:

Gtr. 1 F#

w/fdbk.



9 Gtr. 1 F#5

Musical staff and TAB for Gtr. 1 F#5. The staff is in treble clef with a key signature of one sharp (F#). The note is a whole note with a long horizontal line above it, and a wavy line above the staff labeled "w/fdbk." indicating feedback. The TAB below shows the fretting: 9 9 9, 11 11 11, 11 11 11, (11) (11) (11), and (11) (11) (11).

Musical staff and TAB for Gtr. 1 F#5 with vibrato. The staff is in treble clef with a key signature of one sharp (F#). The note is a whole note with a long horizontal line above it, and a wavy line above the staff labeled "w/fdbk." indicating feedback. The TAB below shows the fretting: (11) (11) (11), (11) (11) (11), (11) (11) (11), (11) (11) (11), (11) (11) (11), (11) (11) (11), and 11 11 11, 11 11 11, 11 11 11.

*All notes vib.

Musical staff and TAB for Gtr. 1 F#5 with vibrato. The staff is in treble clef with a key signature of one sharp (F#). The note is a whole note with a long horizontal line above it, and a wavy line above the staff labeled "w/fdbk." indicating feedback. The TAB below shows the fretting: (11) (11) (11), (11) (11) (11), (11) (11) (11), 11 11 11, 11 11 11, (11) (11) (11), and 11 11 11, 11 11 11, 11 11 11.

E5 F#5 E5 F#

Musical staff and TAB for Gtr. 1 F#5 with vibrato and steady gliss. The staff is in treble clef with a key signature of one sharp (F#). The note is a whole note with a long horizontal line above it, and a wavy line above the staff labeled "w/fdbk." indicating feedback. The TAB below shows the fretting: (11) (11) (11), 11 11 11, 11 11 11, 9 9 9, 9 9 9, 11 11 11, 11 11 11, 9 9 9, 9 9 9, 9 9 9, (9) (9) (9), 3 3 3, 4 4 4, 4 4 4, 2 2 2.

steady gliss.

(E) (D) (E) (D) Harm.

hold - 4 hold - 4

T (12) 9 10 10 7 (7) 9 10 12 (12) 12
A 9 9 9 7
B

(E) (D) (E) (D) Harm.

hold - 4 hold - 4

T (12) 9 10 10 7 (7) 9 10 12 (12) 12
A 9 9 9 7
B

(E) (D) (E) (D) Harm.

hold - 4 hold - 4

T (12) 9 10 10 7 (7) 9 10 12 (12) 12
A 9 9 9 7
B

Repeat and fade

Verse 2:

Peel me off this velcro seat and get me moving.
I sure as hell can't do it by myself.
I'm feeling like a dog in heat
Barred indoors from the summer street.
I locked the door to my own cell
And I lost the key.

Verse 3:

I sit around and watch the phone but no one's calling.
Call me pathetic, call me what you will.
My mother says to get a job,
But she don't like the one she's got.
When masturbation's lost its fun
You're fucking lonely.

Chorus 4:

Bit my lip and close my eyes.
Slipping away to paradise.
Some say quit or I'll go blind,
But it's just a myth.

WELCOME TO PARADISE

Words by
BILLIE JOE

Music by
BILLIE JOE,
TRÉ COOL and MIKE DIRNT

All gtrs. tune down 1/2 step:

⑥ = E♭ ③ = G♭

⑤ = A♭ ② = B♭

④ = D♭ ① = E♭



Fast rock $\text{♩} = 176$

Intro: Rhy. Fig. 1

Gtrs. 1 and 2 E^5 D^5 A^5 *Play 4 times*

T
A
B

Verse:

E^5 D^5

1. Dear moth - er, can you hear me
2. 3. See additional lyrics

Rhy. Fig. 2

T
A
B

E^5 D^5

whin - ing? It's been three whole

T
A
B

— weeks since that I have left your home. —

(end Rhy. Fig. 2)

TAB (7/7) 7 7 7 7 7 7 5 5 5 5 4 (4) 4 4 4 4 4 4 4 4 0 0

w/Rhy. Fig. 2 (Gtrs. 1 and 2)

This sud - den fear — has left — me trem - bling

'cause now it seems — that I — am out here on my own — and I'm

feel - ing so a - lone. —

Gtrs. 1 and 2

TAB 5 5 5 5 4 (4) 4 4 4 4 4 4 4 4 4 4 4 4 4 4 4 4 0 0

Chorus:

Pay at - ten - tion to — the cracked — streets and —

(Aaa)

Rhy. Fig. 3

TAB 1 1 1 1 4 (4) 4 4 4 4 4 4 4 4 0 0

A5 C E G

the bro - ken homes.) Some call it slums,

(end Rhy. Fig. 3)

TAB

B5

— some call it nice. I

TAB

w/Rhy. Fig. 3 (Gtrs. 1 and 2)

E G A5 C5

want to take you through a waste - land I like to call my home..

(Aaa..)

Gtrs. 1 and 2 E B To Coda ⊕

Wel - come to

w/Rhy. Fig. 1 (Gtrs. 1 and 2, 2 times)

E5 D5 A5 E5 D5 A5

par - a - dise. _____

Gtrs. 1 and 2

Chords: E5, D5, A5, E5, D5, A5

Tablature (T, A, B strings):

9	9	9	9	9	0	7	7	0	7	7	7	9	9	9	9	9	0	7	7	0	7	7	7	0	0	0	0	0	0
9	11	9	9	9	0	7	7	0	7	7	7	9	11	9	9	9	0	7	7	0	7	7	7	0	0	0	0	0	0
7	7	7	7	7	0	5	5	0	5	5	0	7	7	7	7	7	0	5	5	0	5	5	0	0	0	0	0	0	0

Interlude:

Chord: E

Tablature (T, A, B strings):

1		(1)	(1)	(1)	(1)	(1)	(1)	(1)
2		2	2	2	2	2	2	2
0		0	0	0	0	0	0	0

w/feedback

Both Gtrs. ad lib.
until indicated otherwise.

Chords: E, G, F#, F

mf P.M. ---4 P.M. ---4 P.M. ---4 P.M. ---4

Tablature (T, A, B strings):

9	12	11	10
7	9	9	10
10	12	12	9
11	11	8	10
10	10		

Play 4 times

*Gtr. 1 continues ad lib.

Chords: E, G, F#, F

P.M. ---4 P.M. ---4 P.M. ---4 P.M. ---4

Tablature (T, A, B strings):

9	12	11	10
7	9	9	10
10	12	12	9
11	11	8	10
10	10		

Chords: E, G, F#, F

P.M. ---4 P.M. ---4 P.M. ---4 P.M. ---4 P.M. ---4

Tablature (T, A, B strings):

9	12	11	10
7	9	0	10
10	12	0	0
11	11	0	0
10	10	0	0

E G F# F
f
 T 9 12 11 10
 A 7 9 0 0 10 12 0 0 9 11 11 0 0 8 10 0 0
 B 7 9 0 0 10 12 0 0 9 11 11 0 0 8 10 0 0

E G F# F E
ff
 T 9 9 9 12 12 12 12 12 11 11 11 11 11 10 10 10 10 10 9 9
 A x x x x x x x x x x x x x x x x x x
 B 7 7 7 10 10 10 10 10 9 9 9 9 9 8 8 8 8 8 7 7

*D.S. $\frac{3}{4}$ at Coda

*Second time only.



Coda

w/Rhy. Fig. 1 (Gtrs. 1 and 2, 4 times)

par - a - dise. ____ Oh ____

par - a - dise. ____ E5
 T
 A
 B

Verse 2:

A gunshot rings out at the station,
 Another urchin snaps and left dead on his own.
 It makes me wonder why I'm still here.
 For some strange reason it's now feeling like my home
 And I'm never gonna go.
 (To Chorus:)

Verse 3:

Dear mother, can you hear me laughing?
 It's been six whole months since I have left your home.
 It makes me wonder why I'm still here.
 For some strange reason it's now feeling like my home
 And I'm never gonna go.
 (To Chorus:)

PULLING TEETH

All gtrs. tune down 1/2 step:

⑥ = E♭ ③ = G♭

⑤ = A♭ ② = B♭

④ = D♭ ① = E♭

Words by
BILLIE JOE

Music by
BILLIE JOE,

TRÉ COOL and MIKE DIRNT

Moderate rock ♩ = 126

Intro: B5

Gr. 1

f hold

T	4	4	4	4	4	4	4	4	4	4	4	4	4	4	4	4	4	4	4	4	5	5	5
A	4	4	4	4	4	4	4	4	4	4	4	4	4	4	4	4	4	4	4	4	4	4	4
B	2	2	2	2	2	2	2	2	2	2	2	2	0	0	0	0	0	0	0	0	0	0	0

Gr. 2

mf

T					11								(11)								9	9	9
A					x								(9)								x	x	x
B					9								(9)								7	7	7

Rhy. Fig. 1

B5

B

1. 2.

B5/A

B/A

Bsus/A

3.

B5

hold

T	4	4	4	4	4	4	4	4	4	4	4	4	4	4	4	4	4	4	4	4	4	4	4
A	4	4	4	4	4	4	4	4	4	4	4	4	4	4	4	4	4	4	4	4	4	4	4
B	2	2	2	2	0	0	0	0	0	0	0	0	0	0	0	0	0	0	0	0	2	2	2

Rhy. Fig. 1A

(Gr. 2 out)

hold

T	8				(8)								9	9	9						(8)		
A	x				(8)								x	x	x						(8)		
B	6				(6)								7	7	7						(6)		

♩ Chorus:
w/Fill I (2nd time)
C#m

Is she ul - tra vio - lent? Is she dis - turbed? I bet - ter

Gtr. 1

*P.M. ---4 hold *P.M. ---4 *P.M. ---4 *P.M. ---4

TAB

*Slight P.M.

tel - her that I love her be - fore she does it all

E C#m

*P.M. -4 hold *P.M. -4

TAB

*Slight P.M.

To Coda

o - ver a - gain. Oh God, she's kill - ing me.

B

*P.M. -4 (hold) *P.M. -4

TAB

Fill I (end of solo)

(Gtr. 2 out)

Harm. ---4

Harm. ---1

TAB

(12) 12 12 12 (12) 12 12 12

Verse:
w/Rhy. Fig. 2 (Gtr. 1)

2. For now I'll lie a - round. Hell, that's all
I can real - ly do. She takes good care of me,
just keep say - ing my love is true.

Gtr. 2
f

7 0

Guitar Solo:

w/Rhy. Fig. 1 (Gtr. 1)

E A Asus2 E B

let ring ----- 4

Harm. -----

(cont. in Fill 1)

Harm. -----

D.S. al Coda



Coda

w/Rhy. Fig's. 1 and 1A (Gtrs. 1 and 2, 2 times)

B5 B B5/A B/A Bsus/A B5 B B5/A B/A Bsus/A

kill ing me.

Bridge:

w/Rhy. Fig's. 1 and 1A (Gtrs. 1 and 2, 3½ times)

B5 B B5/A B/A Bsus/A B5 B B5/A B/A Bsus/A

Look - ing out my win - dow for some - one that's pass - ing by.

B5 B

B5/A B/A

Bsus/A

B5 B

B5 (Gtr. 2 out)

Gtrs. 1 and 2

No one knows I'm locked in here. All I do is cry.

Verse:

w/Rhy. Fig. 1 (Gtr. 1, 1st 6 bars only)

E A Asus2 E B

2. For now I'll lie a - round. Hell, that's all I can real - ly do.

E A Asus2 rit.

She takes good care of me, just keep say -

(rit.)

E B A B E

ing my love is true.

Gtr. 1

(rit.)

TAB

0	4	0	4	0
1	4	0	4	1
2	4	0	4	2
3	4	0	4	3
4	4	0	4	4
5	4	0	4	5
6	4	0	4	6

Instrumental Verse:

w/Rhy. Fig. 5 (Gtrs. 1 and 2, 2 times)

D.S. al Coda

14

on.

\oplus Coda

Gtrs. 1 and 2

hold 4

TAB

*Vocal first time only.

A5 E5 B5

Play 3 times

TAB

E C#m A5/E A5 E5 B5

hold 4

TAB

A5 E5 B5

steady gliss.

TAB

SHE

Words by
BILLIE JOE

Music by
BILLIE JOE,
TRÉ COOL and MIKE DIRNT

All gtrs. tune down ½ step:

- ⑥ = E♭ ③ = G♭
⑤ = A♭ ② = B♭
④ = D♭ ① = E♭

*G



D



C



*Entire chord is fingered, but only the lower strings are strummed. Notes in parentheses are only occasionally heard.

Moderately fast ♩ = 178

Intro: Gtr. 1 (Bass arranged for gtr.)
N.C.(G5)

Intro: Gtr. 1 (Bass arranged for gtr.) N.C.(G5). The notation shows a single melodic line on a treble clef staff with a key signature of one sharp (F#) and a 4/4 time signature. The bass line is shown on a six-string guitar staff with fret numbers 5, 5, 5, 5, 5, 5, (5), 5, 5, 5, 5, 5. A dynamic marking *f* is present.

Verse: G5

*Gtr. 1

Verse: G5 *Gtr. 1. The notation shows a vocal line and a guitar line. The vocal line has lyrics: "1. She, — she screams in si - lence." and "2. See additional lyrics". The guitar line has fret numbers: 5, 5, 5, 5, 5, 5, (5), 5, 5, 5, 5, 7, 5, 5, 5, 5, 5. Pedal points (P.M.) are indicated above the guitar staff.

*Gtr. 1 (Tacet 1st 14 bars, Verse 1)

Verse: G5 *Gtr. 1. The notation shows a vocal line and a guitar line. The vocal line has lyrics: "A sul - len ri - ot pen - e - trat -". The guitar line has fret numbers: (5), 5, 5, 5, 5, 5, 0, 3, 3, 3, 3, 3. Pedal points (P.M.) are indicated above the guitar staff.

G5 C G5

P.M. P.M. P.M. P.M. P.M. P.M. P.M.

ing through her mind. Wait

T
A
B (3) 3 3 3 3 3 3 5 5 5 5 5 5 (5) 5 5 5 5 5

D

P.M. P.M. P.M. P.M. P.M. P.M.

ing for a sign

T
A
B 5 5 5 5 5 5 (5) 5 5 5 5 5 7 5 5 5 5 5

C

P.M. P.M. P.M.

to smash the silence with the brick

T
A
B (5) 5 5 5 5 5 5 0 3 3 3 3 3 3

me un - til my ears bleed. I'm

tak - ing heed just for you.

Yeah!

Bridge:

D.S. al Coda

Are _

Coda

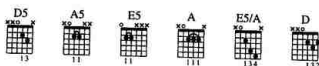
Verse 2:

She, she's figured out all her doubts
 Were someone else's point of view.
 Waking up this time to smash
 The silence with the brick of self-control.
 (To Chorus:)

SASSAFRAS ROOTS

Words by
BILLIE JOE

Music by
BILLIE JOE,
TRÉ COOL and MIKE DIRNT



All gtrs. tune down 1/2 step:

⑥ = E♭ ③ = G♭

⑤ = A♭ ② = B♭

④ = D♭ ① = E♭

Intro: Fast ♩ = 180



1. Roam-

Verses 1 & 2:



2. See additional lyrics



A ES/A A ES/A D E E(type 2)

why are you a - lone - wast - ing - your time, -

when

A ES/A A ES/A D E E(type 2)

you can be with me - wast - ing - your time? -

Well, I'm -

Rhy. Fig. 2

D E E(type 2) D E

- a waste like you, - with noth - ing else to do. -

E(type 2) D5 A5 E5 P.M. -

- May I waste your time too?

(end Rhy. Fig. 2) w/Rhy. Fig. 1 (Gr. 1, 2 times)

E(type 2) E5 E(type 2) A ES/A A ES/A D E E(type 2)

P.M. -

A ES/A A ES/A D E 1. E(type 2) 2. E(type 2)

2. Ward -

Bridge:

F#5 D F#5 D

F#5 D E(type 3)

Verse 3:

w/Rhy. Fig. 1 (Gtr. 1, 2 times)

A ES/A A ES/A D E E(type 2)

why are you a - lone - wast - ing - your time - when

A ES/A A ES/A D E E(type 2)

you could be with me - wast - ing - your time? - Well, I'm -

w/Rhy. Fig. 2 (Gtr. 2)

D E E(type 2) D E

- a waste like you, - with noth - ing else to do. -

E(type 2) D5 A5 E5

- May I waste your - time too?

E(type 2) E5 E(type 2) D A5(type 2) E(type 3)

May I waste your - time too?

D A5(type 2) E(type 3)

May I waste your - time too?

D5 A5 E5

May I waste your - time too?

Verse 2:
 Warding off regrets,
 Wasting your time.
 Smoking cigarettes,
 Wasting your time.
 I'm just a parasite
 Wasting your time.
 Applying myself to
 Wasting your time.
 (To Bridge:)

WHEN I COME AROUND

All gtrs. tune down 1/2 step:

⑥ = E♭ ③ = G♭

⑤ = A♭ ② = B♭

④ = D♭ ① = E♭

Words by
BILLIE JOE

Music by
BILLIE JOE,

TRÉ COOL and MIKE DIRNT

Moderately ♩ = 100

Intro: Gtr. 1

Intro: Gtr. 1

G5 D5 E5 Em E5 C G5 D5

Rhy. Fig. 1

f P.M. - - 4 P.M. - - - - - 4 P.M. - - - - - 4 P.M. P.M. P.M. - - - - - 4 P.M. - -

The Intro section consists of two lines of music. The first line is a guitar melody in treble clef with a key signature of one sharp (F#) and a 4/4 time signature. It starts with a forte (f) dynamic and features a series of chords: G5, D5, E5, Em, E5, C, G5, D5. The second line is a guitar tablature for the same melody, with fret numbers indicated below the strings. The tablature includes a capo on the 2nd fret and various fret numbers such as 5, 7, 9, and 10. The rhythm is marked as P.M. (Palm Mute) with specific patterns: P.M. - - 4, P.M. - - - - - 4, P.M. - - - - - 4, P.M., P.M., P.M. - - - - - 4, P.M. - -.

(end Rhy. Fig. 1) Rhy. Fig. 2

E5 Em E5 C D5 G5 D5 E5 Em E5 C D5

(end Rhy. Fig. 2)

- 4 P.M. - - 4 P.M. - - 4 P.M. - - - - - 4 P.M. - - - - - 4 P.M. P.M. - - 4

The Rhy. Fig. 2 section consists of two lines of music. The first line is a guitar melody in treble clef with a key signature of one sharp (F#) and a 4/4 time signature. It features a series of chords: E5, Em, E5, C, D5, G5, D5, E5, Em, E5, C, D5. The second line is a guitar tablature for the same melody, with fret numbers indicated below the strings. The tablature includes a capo on the 2nd fret and various fret numbers such as 5, 7, 9, and 10. The rhythm is marked as P.M. (Palm Mute) with specific patterns: - 4, P.M. - - 4, P.M. - - 4, P.M. - - - - - 4, P.M. - - - - - 4, P.M., P.M. - - 4.

Verse:

w/Rhy. Fig. 2 (Gtr. 1, 7 times)

G5 D5 E5 Em E5 C D5 G5 D5

1. I heard you cry - in' loud — all the way — a-cross town —

2. See additional lyrics

E5 Em E5 C D5 G5 D5 E5 Em E5 C D5

— You've been search - ing for that some - one, and it's me, — out on the prowl. — As

G5 D5 E5 Em E5 C D5 G5 D5

you sit a - round feel - ing sor - ry for your - self, — well, don't get lone - ly now —

E5 Em E5 C D5 G5 D5 E5 Em E5 C D5

— and dry your whin - ing eyes. — I'm just roam -

The Verse section consists of four lines of music. The first line is a guitar melody in treble clef with a key signature of one sharp (F#) and a 4/4 time signature. It features a series of chords: G5, D5, E5, Em, E5, C, D5, G5, D5. Below the melody are two lines of lyrics: "1. I heard you cry - in' loud — all the way — a-cross town —" and "2. See additional lyrics". The second line is a guitar melody in treble clef with a key signature of one sharp (F#) and a 4/4 time signature. It features a series of chords: E5, Em, E5, C, D5, G5, D5, E5, Em, E5, C, D5. Below the melody is a line of lyrics: "— You've been search - ing for that some - one, and it's me, — out on the prowl. — As". The third line is a guitar melody in treble clef with a key signature of one sharp (F#) and a 4/4 time signature. It features a series of chords: G5, D5, E5, Em, E5, C, D5, G5, D5. Below the melody is a line of lyrics: "you sit a - round feel - ing sor - ry for your - self, — well, don't get lone - ly now —". The fourth line is a guitar melody in treble clef with a key signature of one sharp (F#) and a 4/4 time signature. It features a series of chords: E5, Em, E5, C, D5, G5, D5, E5, Em, E5, C, D5. Below the melody is a line of lyrics: "— and dry your whin - ing eyes. — I'm just roam -".

G5 D5 E5 Em E5 C D5

ing for the mo - ment sleaz - ing my back yard, so don't get so

G5 D5 E5 Em E5 C

up-tight, you been think - ing a - bout ditch - ing me. —

Chorus:
A5

No time to search the

Gr. 1 Rhy. Fig. 3

P.M. -4 P.M. -----4 P.M. ----4 P.M.

TAB

C A5 C

world a - round 'cause you know where I'll be found when I come a-round.

(end Rhy. Fig. 3)

TAB

w/Rhy. Fig. 1 (Gr. 1) w/Rhy. Fig. 2 (Gr. 1)

G5 D5 E5 Em E5 C G5 D5 E5 Em E5 C D5

Guitar Solo:
w/Rhy. Fig. 2 (Gr. 1, 2 times)

2. E5 Em E5 C D5 G5 D5 E5 Em E5 C D5

Oooh!

Gr. 2

f hold

TAB

COMING CLEAN

Words by
BILLIE JOE

Music by
BILLIE JOE,
TRÉ COOL and MIKE DIRNT

All gtrs. tune down 1/2 step:

- ⑥ = E♭ ③ = G♭
⑤ = A♭ ② = B♭
④ = D♭ ① = E♭



Moderately fast ♩ = 172

Verse: B5

*Gtr. 1



1. Sev - en - teen, and strung - out - on - con - fu - sion.
2. See additional lyrics

*Gtr. 1 Fig. Verse 1 only

Verses 2 & 3 w/Rhy. Fig. 1

Rhy. Fig. 1

B5



Trapped in - side a roll - of - dis - il -

G#5

(end Rhy. Fig. 1)

Rhy. Fig. 2

F#5



lu - sion.

I found out what it takes -

E5

E5(type 2)

(end Rhy. Fig. 2)



to - be - a man.

Now,

To Coda ⊕

F#5

E5

1.

E



Mom, and Dad will nev - er - un - der - stand -

what's hap - pen - ing - to

Guitar Solo:

w/Rhy. Fig. 1 (Gtr. 1, 2 times)

me.

Gtr. 2

TAB

7	x	4	4	4	x	4	x	6	x	4	4	6	4	0	4	x	5	4	x	4
4	x	4	4	x	4	4	x	4	x	4	4	4	4	0	4	x	4	4	x	4
4	x	4	4	x	4	4	x	4	x	4	4	4	4	0	4	x	6	6	6	4

B5

TAB

x	4	x	5	4	4	4	7	x	4	4	x	4	x	6	x	4	4	6	4	0
x	4	x	4	4	4	4	4	x	4	4	x	4	x	4	x	4	4	4	4	0
x	6	x	6	6	6	6	4	x	4	4	x	4	x	4	x	4	4	4	4	0

G#5

F#5

w/Rhy. Fig. 2 (Gtr. 1, 2 times)

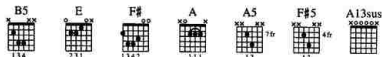
TAB

4	x	5	4	x	4	x	4	x	5	4	4	4	3	4	4	6
4	x	4	4	x	4	x	4	x	4	4	4	4	4	4	4	4
6	x	6	6	x	4	x	6	x	6	6	6	6	4	4	4	4

EMENIUS SLEEPUS

Words by
MIKE DIRNT

Music by
BILLIE JOE,
TRÉ COOL and MIKE DIRNT



All gtrs. tune down 1/2 step:

- ⑥ = E \flat ③ = G \flat
 ⑤ = A \flat ② = B \flat
 ④ = D \flat ① = E \flat

Moderately fast $\text{♩} = 180$

Rhy. Fig. 1

Intro: Gtr. 1 γ \dot{z}

Intro: Gtr. 1 γ \dot{z} f B5 E B5 E B5 E

Verse:

A F# (end Rhy. Fig. 1) B5 E B5 E

w/Rhy. Fig. 1 (Gtr. 1, 2 times)

1. I saw my friend the other day
 2. See additional lyrics

B5 E A F# B5 E

and I don't know exactly just

B5 E B5 E A F#

what he became. It does-n't show...

Chorus:

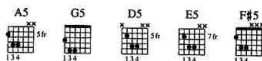
E F# E F#

Real-ly was-n't long ago that I was just like you

IN THE END

Words by
BILLIE JOE

Music by
BILLIE JOE,
TRÉ COOL and MIKE DIRNT



All gtrs. tune down 1/2 step:

⑥ = E \flat ③ = G \flat

⑤ = A \flat ② = B \flat

④ = D \flat ① = E \flat

Verses 1 & 2:

Rhy. Fig. 1

Very fast $\text{♩} = 240$

*Gtr. 1) (end Rhy. Fig. 1)

1. All brawn and no brains and
2. long will he last be fore

*2 Gtrs. arr. for 1

Gtr. 1 cont. Rhy. Fig. 1 sim. (7 times)

all those nice things, yeah, you fi - nal - ly got what you
he's a creep in the past and you're a lone once a

want gain. Will you Some - one to look good with,
pop up a gain and

and light your cig - a - rette. Is this what you real - ly that
be my spe - cial friend 'til the end, and when will that

Chorus:

Gtr. 1 cont. Rhy. Fig. 1 sim. (3 1/2 times)

want? be? I fig - ured out what you're all a

bout and I don't think I like what I see.

w/Rhy. Fig. 1 (Gtr. 1 sim. 4 times)
D5

So, I hope I won't be there in the end if

A5 G5 A5 G5 To Coda ⊕

you come a - round. How

w/Rhy. Fig. 1 (Gtr. 1 sim.)
A5 G5 A5 G5 (Cont. in notation)

Interlude:

Gtr. 1 Riff A
N.C.(A) (G5) (end Riff A) w/Riff A (Gtr. 1) (A) Gtr. 2
G5

T
A
B

5 4 5 3 5 3 0

w/Riff A (Gtr. 1, 12 times)
(A7) (G5) (A7) (G) Play 6 times (Cont. in slashes)

T
A
B

:(0) (0) 0 : (0) (0)

A5 D.S. al Coda

⊕ Coda A5 G5 A5

F.O.D.

Words by
BILLIE JOE

Music by
BILLIE JOE,

TRÉ COOL and MIKE DIRNT

All gtrs. tune down 1/2 step:

⑥ = E♭ ③ = C♭

⑤ = A♭ ② = B♭

④ = D♭ ① = E♭



Moderately fast $\text{♩} = 164$

Verse:

Rhy. Fig. 1

Gtr. 1 (Acoustic) A5

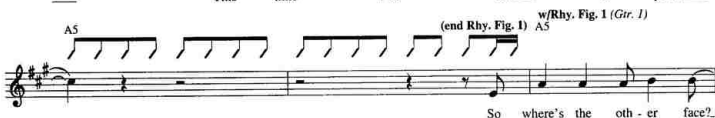


1. Some - thing's on my mind, ... it's been for quite some time. .

2. See additional lyrics



This time I'm on to you. .



So where's the oth - er face? .



The face I heard be - fore. . Your head trip's



bor - ing me. . Let's nuke the bridge. .



we torched two thou - sand times be - fore. .



This time we'll blast it all to hell. .

w/Rhy. Fig. 2 (Gtr. 1)

E5 G5 D5 A5

I've had this burn - ing in my guts now for so long.

E5 G5 D5

My bel-ly's ach - ing now to say.

1. 2. Stuck

2. Gtr. 2 D5 C#5 A5 *ff*

To say...

Gtr. 1

T	7	7	7	7	7	7	7	7	7	7	7	7	7	7	7	7	7	7	7
A	5	5	5	5	5	5	5	5	5	5	5	5	5	5	5	5	5	5	5
B																			

Chorus:

Rhy. Fig. 3 D5 C#5 G5 D5 C#5 A5 D5 C#5 G5 (end Rhy. Fig. 3) D5 C#5 A5

w/Rhy. Fig. 3 (Gtr. 2) D5 C#5 G5 D5 C#5 A5 D5 C#5 G5 D5 C#5 A5

You're just a fuck. I can't ex-plain it 'cause I think you suck.

D5 C#5 G5 D5 C#5 A5 D5 C#5 G5

I'm tak - ing pride in tell-ing you to fuck off and die.

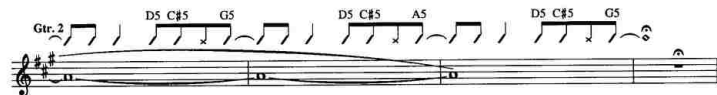
Pre-Chorus:

w/Rhy. Fig. 2 (Gtr. 2) E5 G5 D5 A5

I've had this burn - ing in my guts now for so long.

**Chorus:**

w/Rhy. Fig. 3 (Gtr. 2, 3 times)

**Verse 2:**

Stuck down in a rut of
 Dislogic and smut,
 A side of you well hid.
 When it's all said and done,
 It's real and it's been fun.
 But was it all real fun?

(To Chorus:)

