

SUNRISE

Words and Music by NORAH JONES
and LEE ALEXANDER

Moderately

Cm7 3fr Bb Eb Cm7 3fr Bb

p

This system shows the first five measures of the piano accompaniment. The treble clef contains chords and melodic lines, while the bass clef provides a steady bass line. Chord diagrams for Cm7 (3fr), Bb, Eb, Cm7 (3fr), and Bb are provided above the staff.

Eb Cm7 3fr Bb Eb Abmaj9 3fr

This system continues the piano accompaniment for the next five measures. Chord diagrams for Eb, Cm7 (3fr), Bb, Eb, and Abmaj9 (3fr) are shown above the staff.

Bb Cm7 3fr

Sun - rise, _____ sun - rise, _____ looks like
 sur - prise. _____ Could - n't

Piano solo ad lib.

This system includes the vocal line and piano accompaniment for the first two lines of lyrics. The piano part features a section marked 'Piano solo ad lib.' with a repeat sign. Chord diagrams for Bb and Cm7 (3fr) are shown above the staff.

Bb Eb 3fr

morn - ing in _____ your eyes, _____ but the
 find it in _____ your eyes, _____ but I'm

This system includes the vocal line and piano accompaniment for the second two lines of lyrics. Chord diagrams for Bb and Eb (3fr) are shown above the staff.

Cm7

Eb

Ab(add2)

Eb



clock's held nine fif - teen for hours.
sure it's writ - ten all o - ver my face.

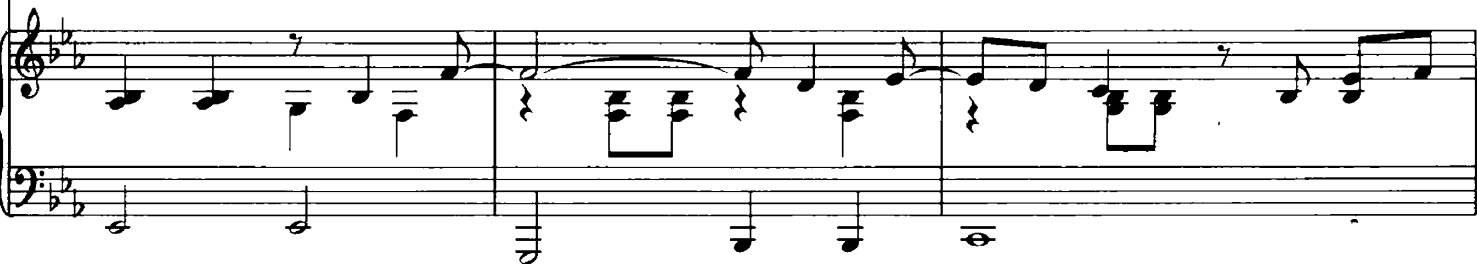


Gm7

Cm7



Sun - rise, sun - rise could - n't
Sur - prise, sur - prise: nev - er



Bb

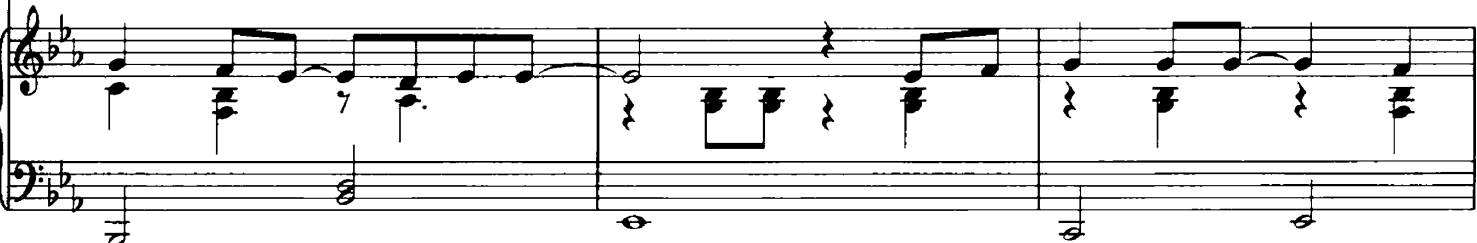
Eb

Cm7

Eb



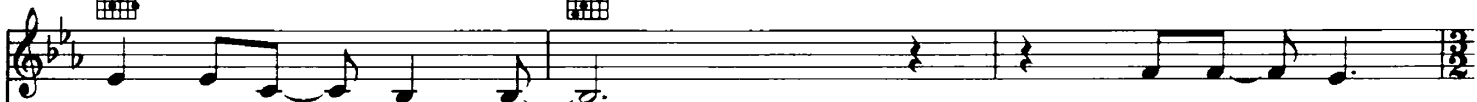
tempt us if it tried, 'cause the af - ter - noon's al -
some - thing I could hide when I see we've made it



Ab(add2)

To Coda

Eb



read - y come and gone. And I said,
through an - oth - er day. Then I say,



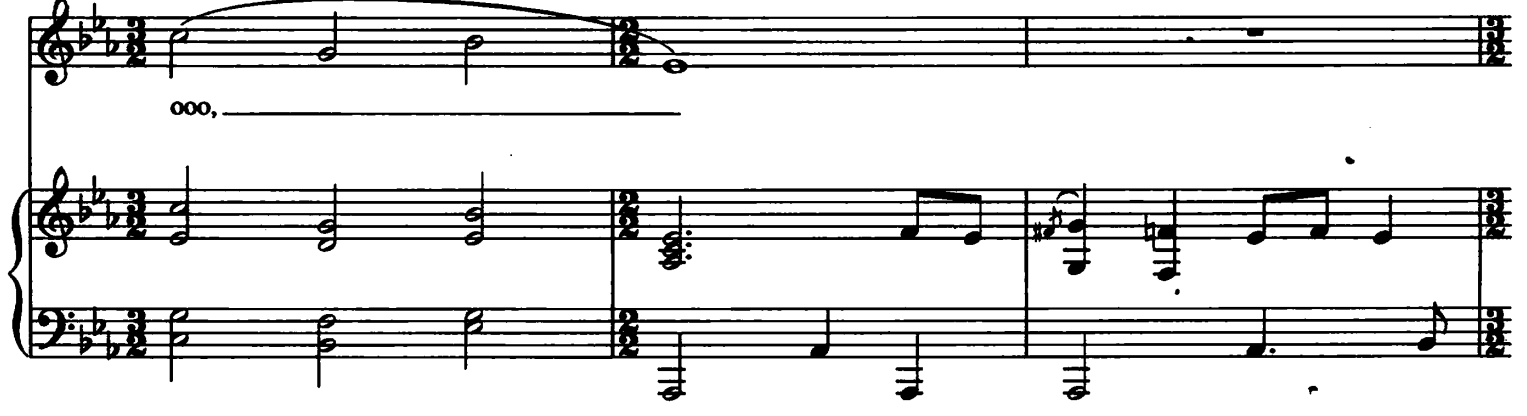
Cm  3fr Bb6  Eb  3fr Ab  4fr

(1., 2.) "Ooo, _____



Cm  3fr Bb6  Eb  3fr Ab  4fr

ooo, _____



Cm  3fr Bb6  Eb  3fr Ab  4fr

ooo" _____ to you. _____




Fm 

1	2
D.S. al Coda	
Sur - prise, _	




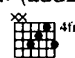
CODA

E \flat  3fr

F/A 

Piano solo ends *And*

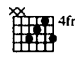


A \flat (add2)  4fr

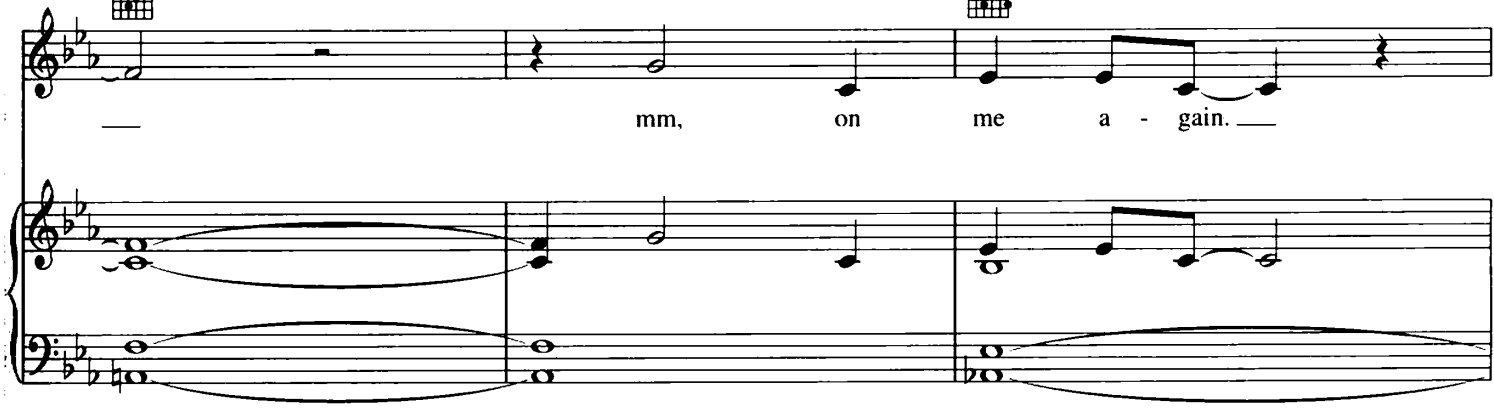
now the night _____ will throw its cov - er down. _



F/A 

A \flat (add2)  4fr

mm, on me a - gain. _



F/A 

Ooh, and if I'm right. _



Ab(add2)



F/A



it's the on - ly way —

Ab(add2)



Bbsus



to bring me — back. —

Cm



Bb6



Eb



Ab



Ooo, —

Cm



Bb6




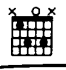
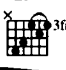
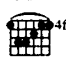
Eb

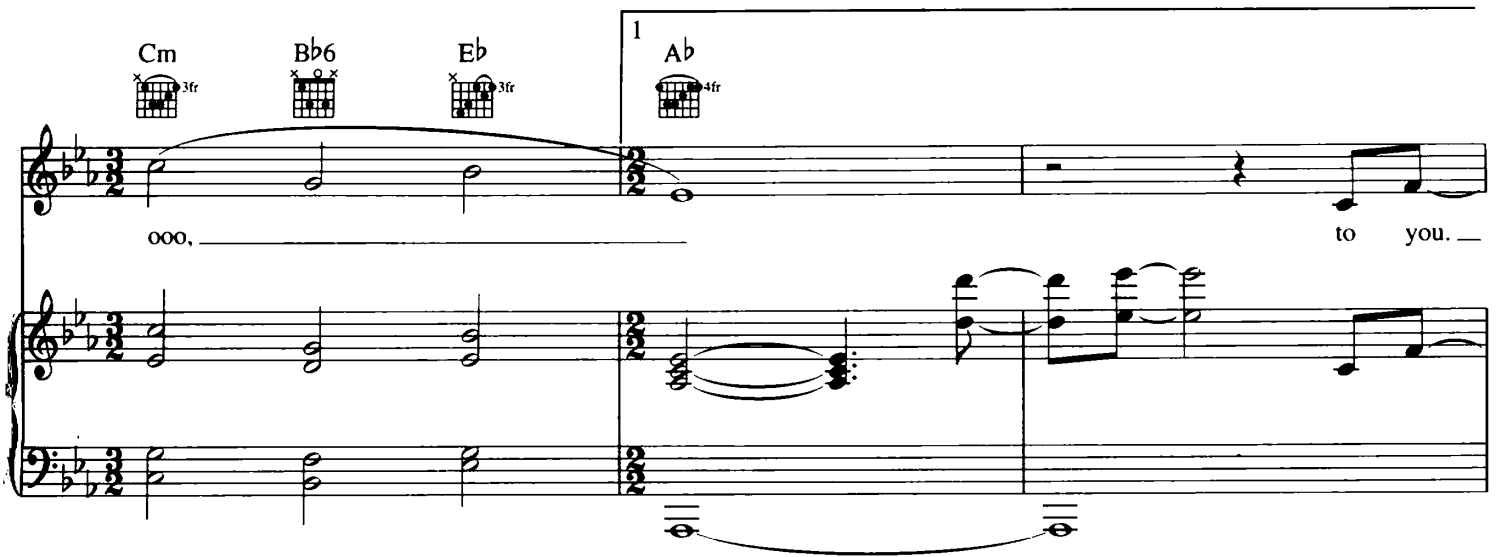


Ab



ooo, —

Cm  3fr Bb6  Eb  3fr 1 Ab  4fr




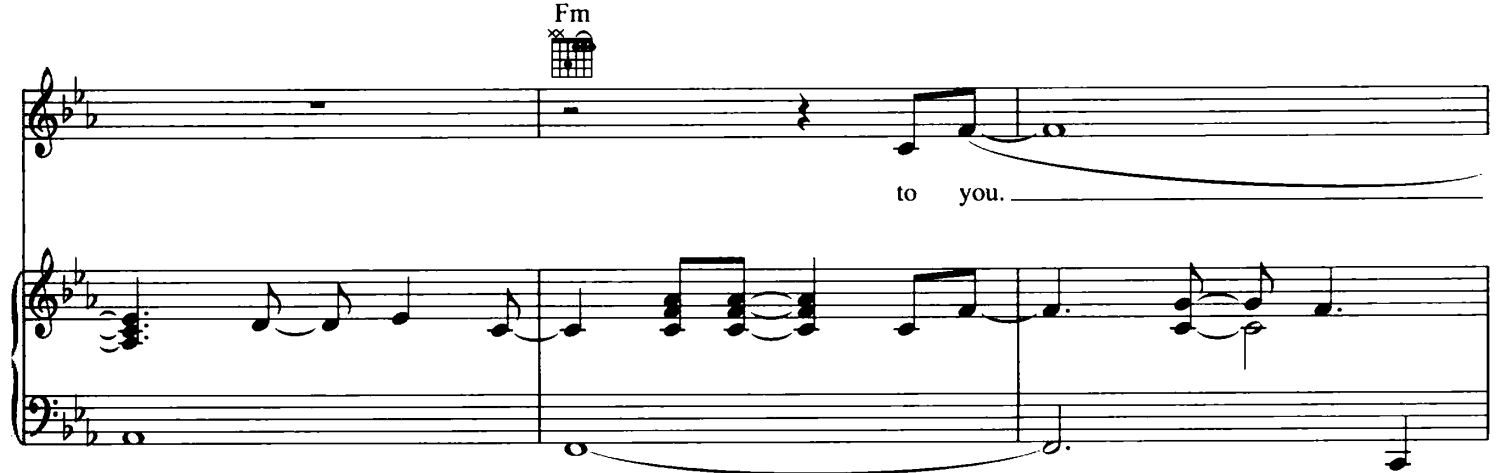
ooo, _____ to you. —

Fm  2 Ab  4fr



(3/2) (3/2) (3/2) (3/2)

Fm 



to you. _____

Eb(add2)  6fr



rit.