

FELIX MENDELSSOHN BARTHOLDY

SONATE F-DUR

für Violine und Klavier

Violine



VEB DEUTSCHER VERLAG FÜR MUSIK LEIPZIG

SONATE F-DUR

für Violine und Klavier

Violine

komponiert 1820

Allegro

7

12

15

19

24

28

34

39

43

7

52

55

60

65

70

76

85

91

96

98

100

f *p*

tr

1. 2.

2 1 3

8 8

2

Detailed description: This page of a violin score contains ten staves of music, numbered 7 through 100. The music is written in a single treble clef with a key signature of one flat (B-flat). The notation includes various rhythmic values, including eighth and sixteenth notes, and rests. Dynamic markings *f* (forte) and *p* (piano) are present. Performance instructions include a trill (*tr*) and first/second endings (1. and 2.). Fingerings are indicated by numbers 1, 2, and 3. A double bar line with repeat dots is used at measure 91. The score concludes with a final cadence at measure 100, marked with a double bar line and a fermata.

Andante

Violin score for the first system, measures 1-73. The music is in 3/8 time and E-flat major. The score consists of ten staves of music. Measure numbers 9, 17, 25, 33, 41, 47, 55, 65, and 73 are indicated at the start of their respective staves. Performance markings include *pizz.* at measure 65 and *c.a.* at measure 73. The piece concludes with a double bar line and repeat dots at the end of the final staff.

81



89



94



101



107



113



120



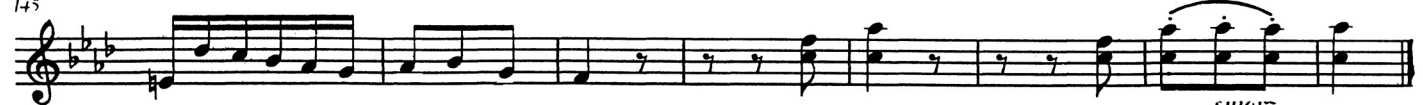
128



136



145



stacc.

Violine

Presto

67

74

81

87

94

99

105

117

122

129

137

143

150

pizz.

c.a.

5

pizz.

I. c.a. | *2. pizz. c.a.*

This is a page of violin sheet music, numbered 7. It contains 11 staves of music, with measure numbers 67, 74, 81, 87, 94, 99, 105, 117, 122, 129, 137, 143, and 150 indicated at the beginning of each staff. The music is written in a single treble clef with a key signature of one flat (B-flat). The notation includes various rhythmic values, accidentals, and performance instructions such as *pizz.* (pizzicato), *c.a.* (crescendo/accelerando), and fingering numbers (2, 5). A first and second ending bracket is present between measures 129 and 137. The page concludes with a double bar line at the end of measure 150.