

Jongo

Paulo Bellinati
(Geneva, 1978)
(São Paulo, 1982)

M
♩. = 140 *a m a*

i m a

gliss.

p ; p m ; a i m i a m i

Musical staff with treble clef, key signature of two sharps (F# and C#), and a 3/4 time signature. The melody consists of eighth and quarter notes. Fingering numbers 2, 1, 0, 4, 1, 0, 3, 2 are indicated above the notes. The bass line consists of quarter notes with bar lines.

Musical staff with treble clef, key signature of two sharps (F# and C#), and a 3/4 time signature. The melody consists of eighth and quarter notes. A fingering number 0 is indicated above a note. The bass line consists of quarter notes with bar lines.

ΦVII - - - - -

Musical staff with treble clef, key signature of two sharps (F# and C#), and a 3/4 time signature. The melody features a triplet of eighth notes and a quarter note. Fingering numbers 3, 2, 4, 3, 2, 1 are indicated above the notes. The bass line consists of quarter notes with bar lines.

ΦII - - - - - ΦIV - - - - - ΦII

Musical staff with treble clef, key signature of two sharps (F# and C#), and a 3/4 time signature. The melody features a triplet of eighth notes and a quarter note. Fingering numbers 3, 2 are indicated above the notes. The bass line consists of quarter notes with bar lines.

♩ CI - - - - - CIII - - - - - CV - - - - - CIII - - - - - CV

gliss.

Musical staff with treble clef, key signature of two sharps (F# and C#), and a 3/4 time signature. The melody features a triplet of eighth notes and a quarter note. Fingering numbers 4, 3, 3, 4 are indicated above the notes. The bass line consists of quarter notes with bar lines.

CIV - - - - - CVI - - - - - CVIII - - - - - CVI

gliss.

Musical staff with treble clef, key signature of two sharps (F# and C#), and a 3/4 time signature. The melody features a triplet of eighth notes and a quarter note. Fingering numbers 4, 3, 3, 4 are indicated above the notes. The bass line consists of quarter notes with bar lines.

ϕV

CVI CVIII CX CVIII ϕX

gliss.

f cresc. sempre

i m a (simile)

③ ②
3 4 0
0
mf *cresc. poco a poco*
⑥ ⑤ ⑤ ⑥

3 4 0
2
⑥ ④ ⑤

3 4 0
1
1 1 2 1 2

3 4 0
2
2 2 2 0 2 0 4
④ ③ ②

3 4 0
2
③ ②

3 4 0
2
② ① ① ② ① ① ②

cresc. sempre

ϕV

CVIII

mp

CIV

CVI

CIV

ϕVI

3b 4b b2

4 2

CVIII

CVI

CVIII

gliss.

4

Musical staff with treble clef, key signature of two sharps (F# and C#), and a 7/8 time signature. It features a melody with various note values and rests, and a bass line with chords. Fingerings are indicated by circled numbers 2, 3, and 4. A dynamic marking 'f' is present at the start.

Musical staff with treble clef, key signature of two sharps, and a 7/8 time signature. It features a melody with various note values and rests, and a bass line with chords. A dynamic marking '>' is present above the staff.

CII CII CII - - - - - 1 CII

Musical staff with treble clef, key signature of two sharps, and a 7/8 time signature. It features a series of chords in the bass line. The chords are labeled with 'CII' and a '1'.

~~VII~~
CIII - - - - - 1 C V

Musical staff with treble clef, key signature of two sharps, and a 7/8 time signature. It features a series of chords in the bass line. The chords are labeled with 'CIII' and 'C V'. There is a handwritten correction from VII to CIII.

ϕIX - - - - - 1 ϕIX - - - - - 1

i m a i a *i m a i a*

Musical staff with treble clef, key signature of two sharps, and a 7/8 time signature. It features a melody with various note values and rests, and a bass line with chords. The melody is labeled with 'i m a i a' and has circled fingerings 2, 3, and 4. A dynamic marking 'p' is present at the start.

Musical staff with treble clef, key signature of two sharps, and a 7/8 time signature. It features a melody with various note values and rests, and a bass line with chords. Fingerings are indicated by circled numbers 2, 3, and 4.

ΦVII ----- ΦV

ΦII -----

CI ----- CIII ----- CIII ----- CI -----

② *gliss.* ③ ④ ③ ⑤ ④

③

CVI ----- CVIII ----- *gliss.* ④ ③ ②

Musical staff with treble clef, key signature of two sharps, and a sequence of chords with fingerings 3, 1, 4, 2, 3, 4, 1, 4, 1, 3.

ϕVII

Musical staff with treble clef, key signature of two sharps, and a sequence of chords with fingerings 2, 4, 3, 4, 4, 3, 3, 4.

Musical staff with treble clef, key signature of two sharps, and a sequence of chords with fingerings 4, 2, 3, 4, 3, 1, 4, 2, 4, 1.

Musical staff with treble clef, key signature of two sharps, and a sequence of chords with fingerings 4, 3, 2, 1, 2, 3, 4, 2, 1, 2, 3, 4.

Musical staff with treble clef, key signature of two sharps, and a sequence of chords with fingerings 4, 3, 2, 1, 0, 0, 2, 1, 3, 4, 1, 2, 3, 4, 1, 3, 0, 0.

ff

Musical staff with treble clef, key signature of two sharps, and a sequence of chords with fingerings 4, 3, 4, 3, 3, 4, 0, 0, 3, 4, 0, 0, 1, 0, 1, 0, 1, 0, 0, 1, 0, 0, 1, 0, 0, 1, 0, 0.

♯VII - - - - -

CI - - - - -

p legato

CIV - - - - -

cresc. poco a poco

CIII - - - - -

CVI - - - - -

Musical staff with notes and fingerings: 4, 0, 3, 2. Includes an optional percussion section instruction: (optional) percussion section see page 13.

Musical staff with chords and a forte (*f*) dynamic marking.

Musical staff with chords and dynamic markings: ΦII, ΦIV.

Musical staff with chords and dynamic markings: ΦIII, ΦII, ΦV, ΦIV, ΦVII, ΦVI, ΦIX, ΦVIII.

Musical staff with chords and a fortissimo (*ff*) dynamic marking.

ΦIII ΦII ΦV

D. S. al Coda

♩ Coda

gliss.

CH

ΦVII

CII

ff

gliss.

CII ΦIII

CH

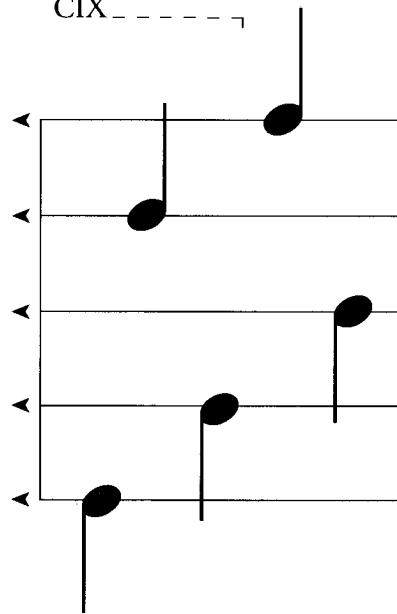
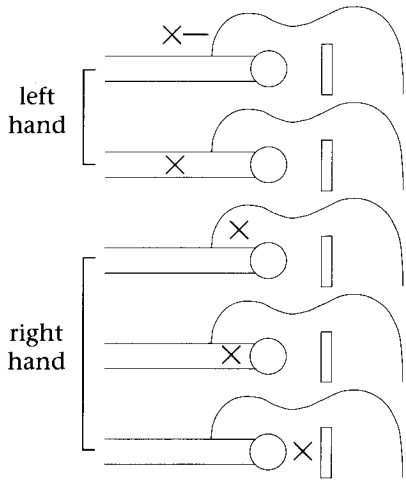
rall.

p → *i m*

PERCUSSION SECTION

barre 2, 3, and 4 fingers - only to mute
(do not depress or fret the strings)

CIX - - - - -



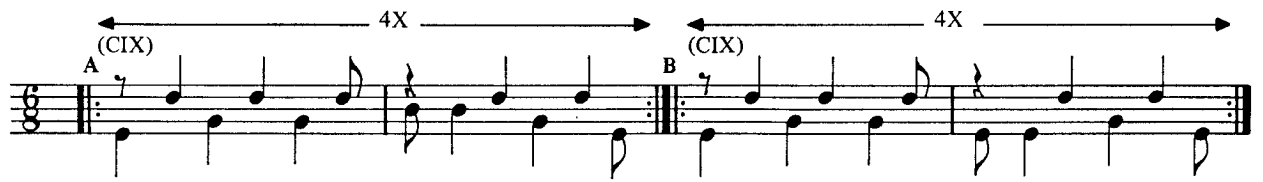
Slap left palm against the guitar's side
(wood sound).

Slap the strings against the fingerboard with left
hand fingers 2, 3, & 4 (keep the barre).

Slap the right hand against the guitar's top
(wood sound).

Slap the strings against the fingerboard
with left hand fingers (keep the barre).

Slap the right hand against the strings near the
bridge (bass sound) (keep the barre).



- 1) Patterns A, B, C, D, & E can be played in different orders or combinations.
- 2) The number of repeats for each pattern can be also improvised.
- 3) The player can also improvise new patterns keeping the "Jongo" style.