

Church On Fire

Words and Music by Russell Fragar



© 1997 Russell Fragar / Hillsong Publishing
PO Box 1195 Castle Hill NSW 1765 Australia
Ph: 61 2 8853 5353 Fax: 61 2 9899 4591
Email: publishing@hillsong.com

Church On Fire

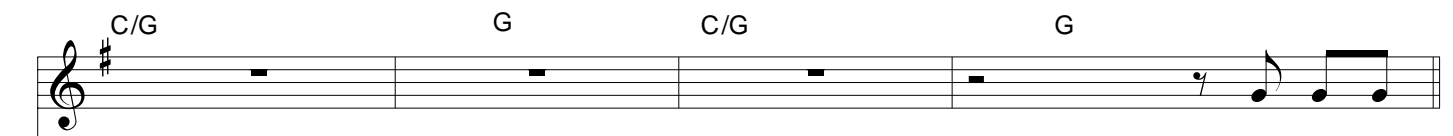
♩ = 165

Words and Music by Russell Fragar

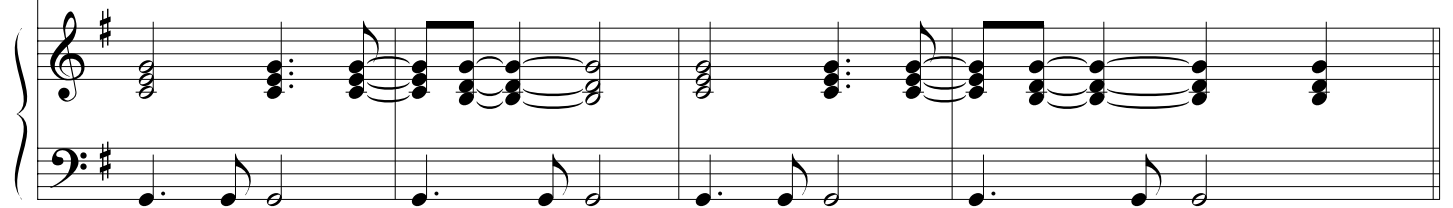
A NC PLAY 3 TIMES



C/G G C/G G

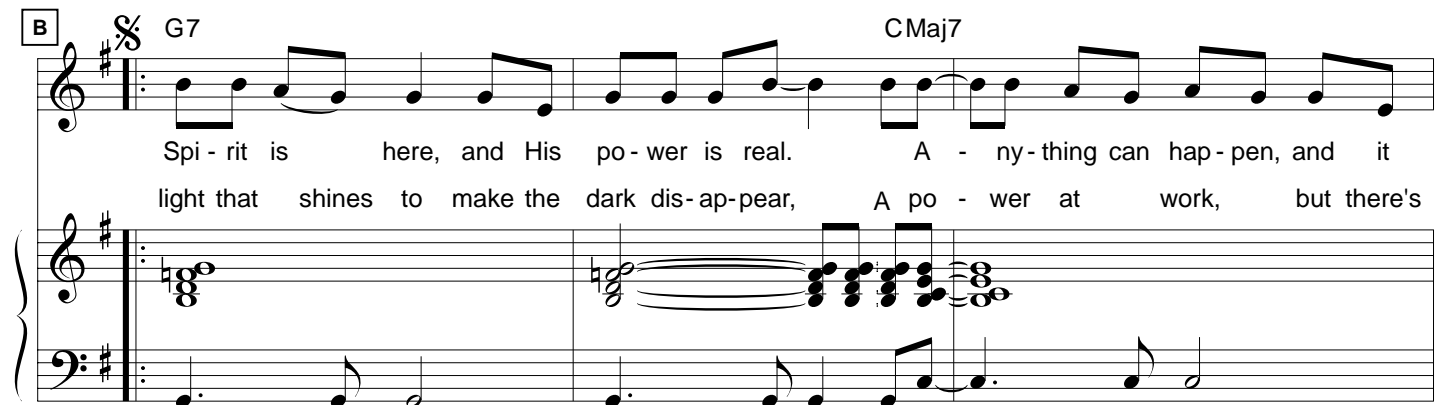


Versel: The Ho - ly



B G7 CMaj7

Spi - rit is here, and His po - wer is real. A - ny - thing can hap - pen, and it
light that shines to make the dark dis - ap - pear, A po - wer at work, but there's



A7 D7

pro - bab - ly will. Some - thing ve - ry good, some - thing good is go - ing on a - round
no - thing to fear.



1,3 NC

2,4 NC

here. There's a here.

Detailed description: This system contains the first two measures of the piece. The vocal line starts with a quarter note G4, followed by quarter notes A4 and B4, then a quarter rest. The piano accompaniment consists of eighth notes in both hands, with a key signature of one sharp (F#) and a common time signature. The first measure is marked with '1,3 NC' and the second with '2,4 NC'. The lyrics 'here.' and 'There's a here.' are positioned below the vocal line.

C repeat 2nd time only

C/G

G

This is a church on fi - re, this is the

Detailed description: This system contains measures 3 and 4. The vocal line has a quarter rest in measure 3, followed by quarter notes G4, A4, and B4 in measure 4. The piano accompaniment features a key signature of one sharp and common time. Measure 3 is marked with a box containing 'C' and the text 'repeat 2nd time only'. Measure 4 has a 'C/G' chord marking above the first half and a 'G' chord marking above the second half. The lyrics 'This is a church on fi - re, this is the' are written below the vocal line.

D/F#

Em7

C/G

Ho - ly Spi - rit flame. We have a bur - ning de - si -

Detailed description: This system contains measures 5 and 6. The vocal line has quarter notes G4, A4, B4, and C5 in measure 5, followed by quarter notes G4, A4, and B4 in measure 6. The piano accompaniment continues with eighth notes and chords. Measure 5 has a 'D/F#' chord marking above the first half and an 'Em7' chord marking above the second half. Measure 6 has a 'C/G' chord marking above the first half. The lyrics 'Ho - ly Spi - rit flame. We have a bur - ning de - si -' are written below the vocal line.

G

Am7

D7

re to lift up Je - sus' name. Let

Detailed description: This system contains measures 7 and 8. The vocal line has quarter notes G4, A4, and B4 in measure 7, followed by quarter notes G4, A4, and B4 in measure 8. The piano accompaniment features chords and eighth notes. Measure 7 has a 'G' chord marking above the first half and an 'Am7' chord marking above the second half. Measure 8 has a 'D7' chord marking above the first half. The lyrics 're to lift up Je - sus' name. Let' are written below the vocal line.

D $\text{\textcircled{S}}$ **C** **G/B** **C**

fi - re burn in ev - ery heart, to light the way de - feat

G/B **Am7** **D7**

the dark. Let the flame of love burn high - er.

C **D** **1st Time G**

This is a church, this is a church on fi - re.

G **D** $\text{\textcircled{S}}$ **2nd Time NC**

The Ho - ly re. This is a

3,4. G C/G G D:SSx2 5. NC

re. Let re.

Detailed description: This system contains a vocal line and a piano accompaniment. The vocal line is in treble clef with a key signature of one sharp (F#). It consists of two phrases. The first phrase, labeled '3,4.', has a melody starting on G4, moving to A4, B4, and then a half note G4. Chords G, C/G, and G are indicated above the notes. The second phrase, labeled '5. NC', starts with a repeat sign and has a melody starting on G4, moving to A4, B4, and then a half note G4. The piano accompaniment is in grand staff (treble and bass clefs). The right hand plays chords and moving lines, while the left hand plays a simple bass line. The system ends with a double bar line and repeat dots.

G

PLAY 6 TIMES

Detailed description: This system contains a single note in the vocal line and piano accompaniment. The vocal line is in treble clef with a key signature of one sharp (F#). It consists of a single half note G4, followed by a repeat sign and a double bar line. The piano accompaniment is in grand staff (treble and bass clefs). The right hand plays a sequence of eighth notes: G4, A4, B4, A4, G4. The left hand plays a sequence of eighth notes: G3, F#3, E4, D4. The system ends with a double bar line and repeat dots.

Church On Fire

Words and Music by Russell Fragar

♩ = 165

A NC Brass/Guit riff.

PLAY 3 TIMES



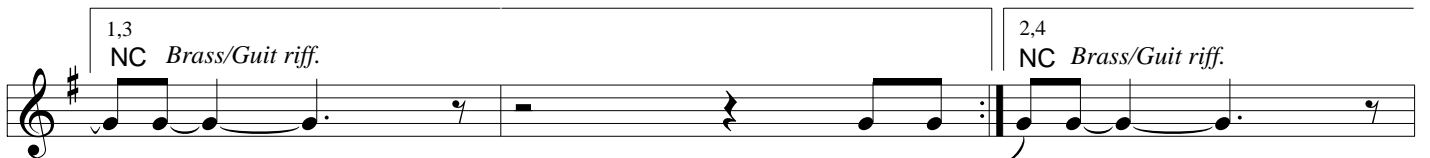
1. The Ho - ly



Spi - rit is here, and His po - wer is real. A - ny - thing can hap - pen, and it
light that shines to make the dark dis - ap - pear, A po - wer at work, but there's

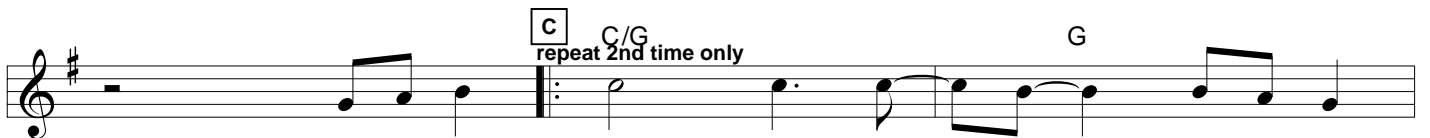


pro - bab - ly will. Some - thing ve - ry good, some - thing good is go - ing on a - round
no - thing to fear.

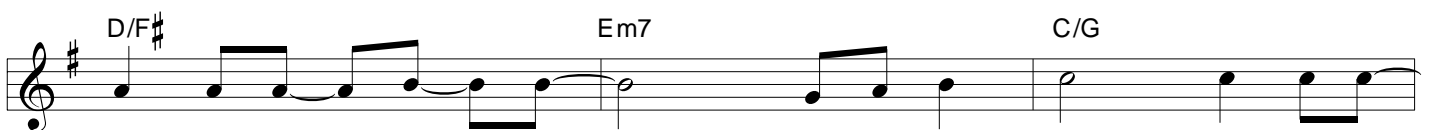


here.

2. There's a here.



This is a church on fi - re, this is the



Ho - ly Spi - rit flame. We have a bur - ning de - si -

G Am7 D7

re to lift up Je - sus' name. Let

D C G/B C

fi - re burn in ev - ery heart, to light the way de - feat

G/B Am7 D7

the dark. Let the flame of love burn high - er.

C D G

1st Time

This is a church, this is a church on fi - re.

G D

2nd Time NC

The Ho - ly re. This is a

3,4. G C/G G D

5. Brass/Guit riff. NC

re. Let re.

PLAY 6 TIMES G

CHURCH ON FIRE

Words and Music by Russell Fragar

VERSE:

**The Holy Spirit is here
And His power is real
Anything can happen
And it probably will
Something very good,
Something good is going on
Around here**

**There is a light that shines
To make the dark disappear
A power at work
But there's nothing to fear
Something very good,
Something good is going on around here**



© 1997 Russell Fragar / Hillsong Publishing
PO Box 1195 Castle Hill NSW 1765 Australia
Ph: 61 2 8853 5353 Fax: 61 2 9899 4591
Email: publishing@hillsong.com

CHORUS:

This is a church on fire

This is the Holy Spirit flame

We have a burning desire

To lift up Jesus' name

Let fire burn in every heart

To light the way, defeat the dark

Let the flame of love burn higher

This is a church

This is a church on fire