

# PIANO MAN

Words and Music by  
Billy Joel

Moderately

mf

First system of piano introduction, featuring a treble and bass staff with a dynamic marking of *mf*.

Second system of piano introduction, continuing the treble and bass staves.

1st time, directly to verse  
Last time, Fine  
slower

Third system of piano introduction, including performance directions for the first and last times.

C

Chord diagram for C major.

Em/B bass

Chord diagram for Em/B bass.

Am

Chord diagram for Am.

C/G bass

Chord diagram for C/G bass.

1. It's nine o'clock on a Saturday, The  
(2. Now) John at the bar is a friend of mine, He  
(3. Now) Paul is a real-estate novelist, Who  
(4. It's a) pretty good crowd for a Saturday, And the

mp

Fourth system of piano introduction, including a dynamic marking of *mp*.



C/E bass



reg - u - lar crowd shuf - fles in There's an old man  
 gets me my drinks for free, And he's quick with a  
 nev - er had time for a wife And he's talk - in' with  
 man - ag - er gives me a smile 'Cause he knows that it's

Em/B bass



C/G bass



— sit - ting next to me Mak - in' love to his ton - ic and  
 joke or to light up your smoke But there's some - place that he'd rath - er  
 Dav - y who's still in the Nav - y And prob - ab - ly will be for  
 me they've been com - in' to see To for - get a - bout life for a



F/C bass



Cmaj7



gin. He says, "Son, can you  
 be. He says, "Bill, I be -  
 life. And the wait - ress is  
 while. And the pia - no

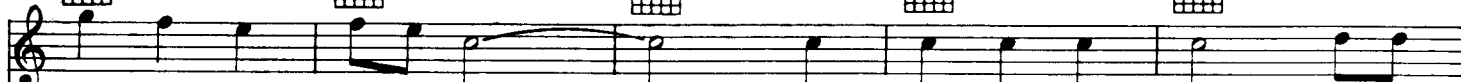
Em/B bass

Am

C/G bass



C/E bass



play me a mem - o - ry?  
lieve this is kill - ing me,"  
prac - tic - ing pol - i - tics,  
sounds like a car - ni - val

I'm not real - ly sure how it  
As a smile ran a - way from his  
As the bus - 'ness - men slow - ly get  
And the mic - ro - phone smells like a



D7

G

C

Em/B bass

Am



goes,  
face  
stoned  
beer

But it's sad and it's sweet and I knew it com -  
"Well, I'm sure that I could be a mov - ie  
Yes, they're shar - ing a drink they call lone - li -  
And they sit at the bar and put bread in my



C/G bass



G11



plete  
star When I wore a young - er man's clothes."  
ness If I could get out of this place."  
jar But it's bet - ter than drink - in' a lone.  
And say "Man, what are you do - in' here?"



Am

Am/G bass

D7/F# bass

F

Am

Da da da da de de da da da  
 Da da da de de da da da  
*Instrumental*  
 Da da da de de da da da

Am/G bass

D7/F# bass

D7

G

G/F bass

de de da da da  
 de de da da da  
 de de da da da

C/E bass

G7/D bass

C

Em/B bass

Am

Sing us a song, you're the pia - no man

C/G bass



F



C/E bass



D7



Sing us a song to - night.



Em/B bass



Well, we're all in the mood for a mel - o - dy.

C/G bass

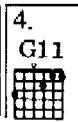
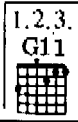


And you've got us feel - in' al - right.

F/C bass



Cmaj7



*D. C. al Fine*

- 2. Now
- 3. Now
- 4. It's a