



GYMNOPIEDIE

Erik Satie
1^{re} Gymnopédie

Andante







Handwritten musical notation on a grand staff. The upper staff contains a melodic line with various note values and rests. The lower staff contains a bass line with a series of eighth notes, some of which are beamed together. The notation is in black ink on aged paper.

Handwritten musical notation on a grand staff. The upper staff continues the melodic line from the previous system. The lower staff continues the bass line with eighth notes. The notation is in black ink on aged paper.

Handwritten musical notation on a grand staff. The upper staff continues the melodic line. The lower staff continues the bass line with eighth notes. The notation is in black ink on aged paper.

Handwritten musical notation on a grand staff. The upper staff continues the melodic line. The lower staff continues the bass line with eighth notes. The notation is in black ink on aged paper.

Nov 1688



Handwritten musical notation for the first system. The top staff (treble clef) contains a melodic line with notes, rests, and a slur. The bottom staff (bass clef) contains a bass line with notes and rests. The notation is in black ink on aged paper.

Handwritten musical notation for the second system. The top staff (treble clef) contains a melodic line with notes and rests. The bottom staff (bass clef) contains a bass line with notes and rests. The notation is in black ink on aged paper.

Handwritten musical notation for the third system. The top staff (treble clef) contains a melodic line with notes and rests. The bottom staff (bass clef) contains a bass line with notes and rests. The notation is in black ink on aged paper.

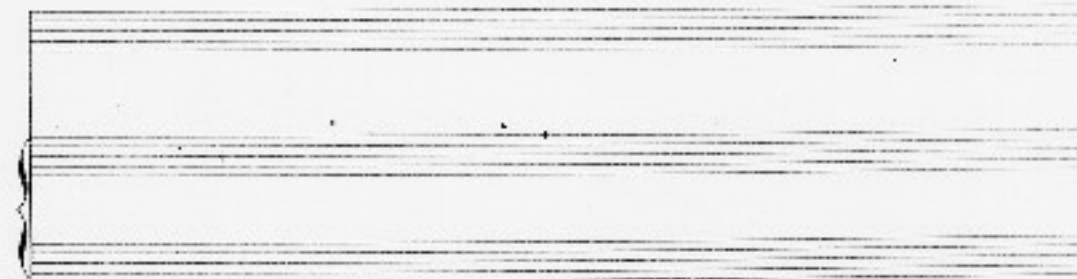
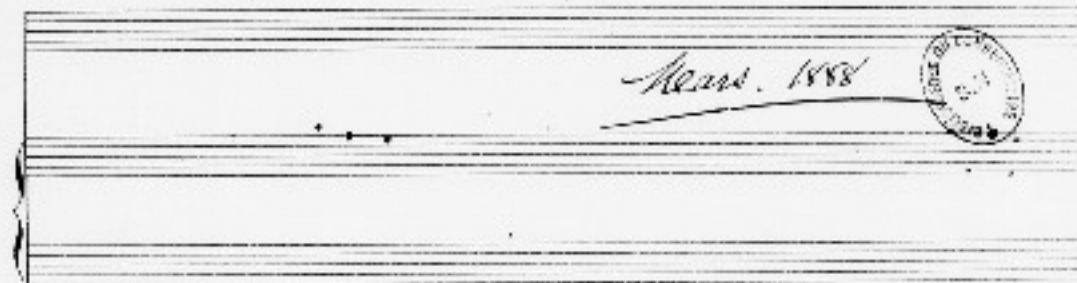
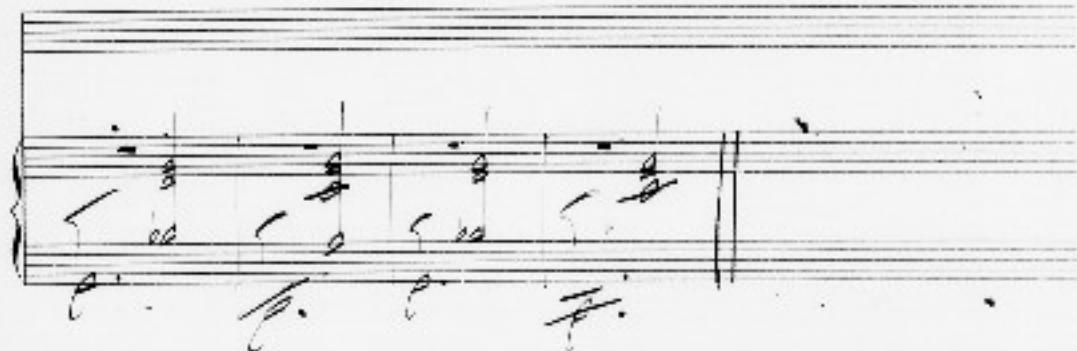
Handwritten musical notation for the fourth system. The top staff (treble clef) contains a melodic line with notes and rests. The bottom staff (bass clef) contains a bass line with notes and rests. The notation is in black ink on aged paper.

Handwritten musical notation for the first system. The system consists of two staves. The upper staff is a treble clef staff with a key signature of one flat (B-flat) and a common time signature (C). It contains a melodic line with notes, rests, and slurs. The lower staff is a bass clef staff with a key signature of one flat and a common time signature, containing a bass line with notes and rests.

Handwritten musical notation for the second system. The system consists of two staves. The upper staff is a treble clef staff with a key signature of one flat and a common time signature, containing a melodic line with notes, rests, and slurs. The lower staff is a bass clef staff with a key signature of one flat and a common time signature, containing a bass line with notes and rests.

Handwritten musical notation for the third system. The system consists of two staves. The upper staff is a treble clef staff with a key signature of one flat and a common time signature, containing a melodic line with notes, rests, and slurs. The lower staff is a bass clef staff with a key signature of one flat and a common time signature, containing a bass line with notes and rests.

Handwritten musical notation for the fourth system. The system consists of two staves. The upper staff is a treble clef staff with a key signature of one flat and a common time signature, containing a melodic line with notes, rests, and slurs. The lower staff is a bass clef staff with a key signature of one flat and a common time signature, containing a bass line with notes and rests.



Handwritten musical notation on a grand staff with a treble clef. The music features a melodic line in the upper voice and a bass line in the lower voice. A dynamic marking 'pp' is present. A large slur covers the first two measures.

Handwritten musical notation on a grand staff with a treble clef. The music continues with a melodic line and a bass line. A large slur covers the first two measures.

Handwritten musical notation on a grand staff with a treble clef. The music continues with a melodic line and a bass line. A large slur covers the first two measures.

Handwritten musical notation on a grand staff with a treble clef. The music continues with a melodic line and a bass line. A large slur covers the first two measures.



Handwritten musical notation on a grand staff. The top staff has a treble clef and the bottom staff has a bass clef. The notation includes various notes, rests, and dynamic markings such as *pp* and *p*.

Handwritten musical notation on a grand staff, continuing from the first system. It features notes, rests, and dynamic markings like *pp*.

Handwritten musical notation on a grand staff, mostly obscured by a large signature and a circular stamp. The signature appears to be "R. ...".

