

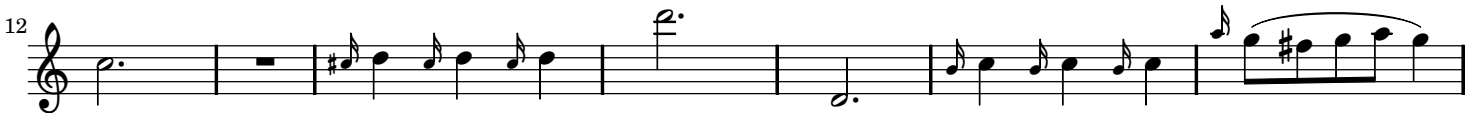
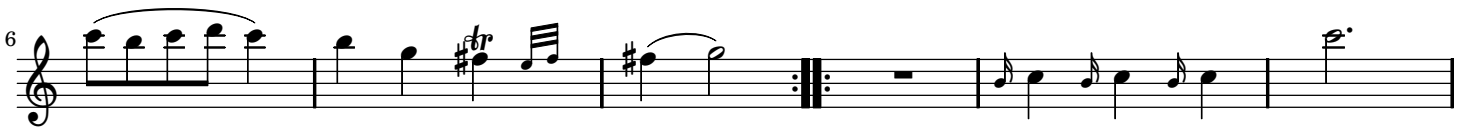
III. Menuetto I & II

from Sonata in C major for violin or flute

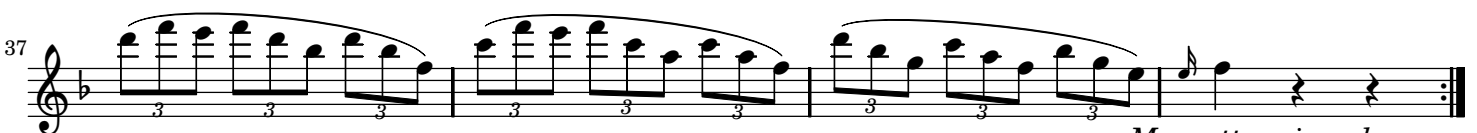
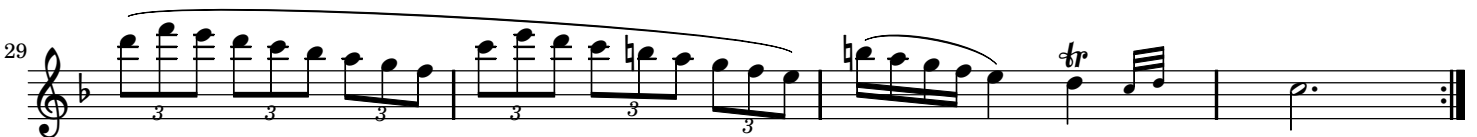
Wolfgang Amadeus Mozart (1756–1791)

K. 14

Menuetto primo (♩ = 126)



Menuetto secondo en Carillon



Menuetto primo da capo

III. Menuetto I & II

from Sonata in C major for violin or flute

Wolfgang Amadeus Mozart (1756–1791)

K. 14

Menuetto primo (♩ = 126)

Measures 1-5 of the first system. The music is in 3/4 time, C major. The flute part (top staff) begins with a quarter note G4, followed by eighth notes A4-B4, quarter notes C5-B4, and quarter notes A4-G4. The piano accompaniment (bottom two staves) features a steady eighth-note bass line in the left hand and a treble line with eighth and quarter notes in the right hand. The word *legato* is written below the piano part.

Measures 6-10 of the first system. Measure 6 starts with a quarter note G4. Measure 7 has eighth notes A4-B4. Measure 8 has quarter notes C5-B4. Measure 9 has quarter notes A4-G4. Measure 10 has quarter notes F4-E4. A repeat sign is placed at the end of measure 10.

Measures 11-14 of the first system. Measure 11 has a quarter note G4. Measure 12 has quarter notes A4-B4. Measure 13 has quarter notes C5-B4. Measure 14 has quarter notes A4-G4. A repeat sign is placed at the end of measure 14.

Measures 15-19 of the first system. Measure 15 has a quarter note G4. Measure 16 has eighth notes A4-B4. Measure 17 has quarter notes C5-B4. Measure 18 has quarter notes A4-G4. Measure 19 has quarter notes F4-E4. A repeat sign is placed at the end of measure 19.

20

Menuetto secondo en Carillon

25

30

36

Menuetto primo da capo