

Halleluja

Leonard Cohen

Alt/bariton

Sopraan

piano

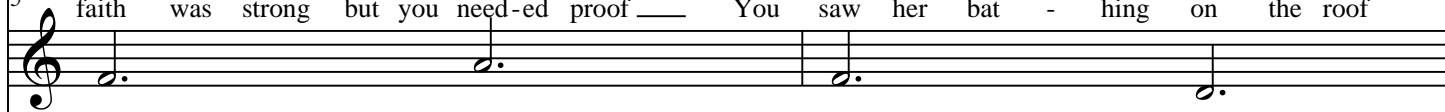
piano

3

5



5
faith was strong but you need-ed proof You saw her bat - hing on the roof



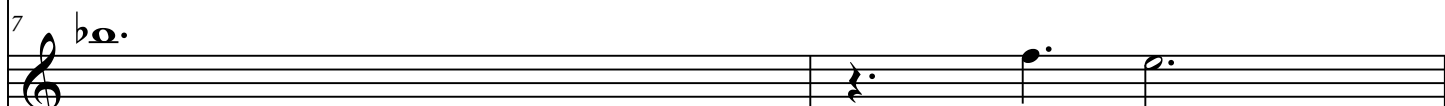
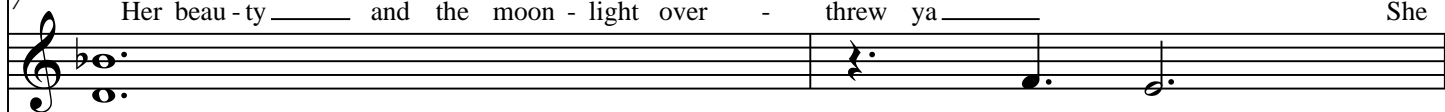
5 F D min F D min



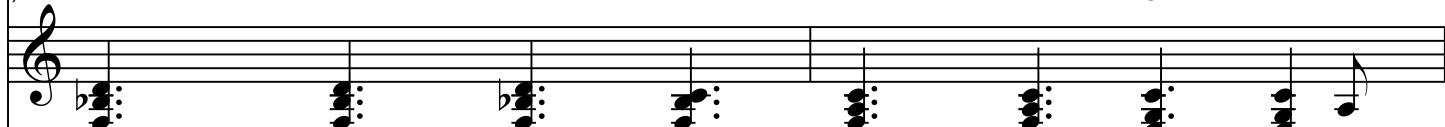
7



7
Her beau-ty and the moon-light over - threw ya She



7 B \flat F C



9

9 goes like this the fourth, the fifth The min - or fall, _____ and the maj - or lift _____ The
 tied you To her kit - chen chair She broke your throne, _____ and she cut your hair _____ And

9 F B \flat C D min B \flat

11

11 baf - fled king comp - o - sing Hal - le - lu - jah _____ Ha - le - lu - jah Ha - le -
 from your lips she drew the Ha - le - lu - jah _____

11 C A7 D m B \flat

4

14

14 lu - jah Ha - le - lu - jah Ha - le - lu -

14 Dm Bb F C

Detailed description: This system contains measures 14, 15, and 16. It features a vocal line with lyrics, a piano accompaniment in the right hand, and a bass line. The lyrics are 'lu - jah Ha - le - lu - jah Ha - le - lu -'. The piano accompaniment includes chord markings: Dm, Bb, F, and C. The bass line provides a rhythmic accompaniment with eighth and sixteenth notes.

17

17 jah

17 F Dm F Dm F Dm

Detailed description: This system contains measures 17, 18, and 19. It features a vocal line with lyrics, a piano accompaniment in the right hand, and a bass line. The lyrics are 'jah'. The piano accompaniment includes chord markings: F, Dm, F, Dm, F, and Dm. The bass line continues the rhythmic accompaniment.

20

20

But may - be there's a God a - bove___ But

20

D G Emin

20

Detailed description: This system contains measures 20 and 21. It features a vocal line in the second staff with lyrics. The guitar accompaniment is shown in the third and fourth staves. The key signature has one sharp (F#). The guitar part includes chord diagrams for D, G, and Emin. The bass line is in the fifth staff.

22

22

all I e - ver learned from love Was how to___ shoot some-bo - dy___ who out -

22

G Em(add2) C C

22

Detailed description: This system contains measures 22 and 23. It features a vocal line in the second staff with lyrics. The guitar accompaniment is shown in the third and fourth staves. The key signature has one sharp (F#). The guitar part includes chord diagrams for G, Em(add2), and C. The bass line is in the fifth staff.

24

24

drew ya - - - it's not a cry — that you hear at night — It's

24

G D G C D

24

Detailed description: This system contains measures 24 and 25. It features a vocal line in treble clef with a key signature of one sharp (F#) and a 4/4 time signature. The lyrics are "drew ya - - - it's not a cry — that you hear at night — It's". Below the vocal line is a piano accompaniment in treble clef with chords and a bass line in bass clef. A guitar chord chart is provided below the piano part, showing chords G, D, G, C, and D for measures 24 and 25.

26

26

not some - one — who has seen the light It's a cold and it's a bro - ken Ha - le -

26

E min C D B7

26

Detailed description: This system contains measures 26 and 27. It features a vocal line in treble clef with a key signature of one sharp (F#) and a 4/4 time signature. The lyrics are "not some - one — who has seen the light It's a cold and it's a bro - ken Ha - le -". Below the vocal line is a piano accompaniment in treble clef with chords and a bass line in bass clef. A guitar chord chart is provided below the piano part, showing chords E min, C, D, and B7 for measures 26 and 27.