

As performed by Richard Marx and Donna Lewis
AT THE BEGINNING

Lyrics by LYNN AHRENS

Music by STEPHEN FLAHERTY

Rock ♩ = 92

N.C.

Verse:

B G#m7 B/A F#m7 B G#m7

1. We were stran - gers start - ing out on a jour - ney, nev - er dream - ing what we'd

E(9) F# G#m F#/A# B B/D# E(9)

have to go through... Now here we are and I'm sud - den - ly stand - ing

Verse:

at the be - gin - ning with you. 2. No one told me I was

A(9) *F#sus* *F#* *Db* *Bbm7*

go - ing to find you. Un - ex - pect - ed, what you did to my heart. When

D/Cb *Abm7* *Db* *Bbm7* *Gb(9)* *Ab*

I lost hope, you were there to re - mind me this is the start.

Bbm *A/C* *Db* *D/F* *Gb(9)* *Cbmaj7*

cresc.

Chorus:

And life is a road, and I want to keep go - ing. Love is a riv - er, I wan - na keep flow - ing.

Absus *Ab* *Db* *Gbmaj9*

mf

B \flat m7 G \flat (9) A \flat sus A \flat D \flat

Life is a road, now_ and for-ev-er. Won-der-ful jour - ney! I'll be there when the world stops turn-ing.

G \flat maj9 B \flat m7 G \flat (9) A \flat sus

I'll be there when the storm is through. In the end, I wan - na be stand-ing at the be-gin-ning with

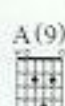
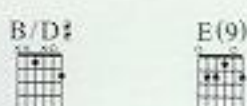
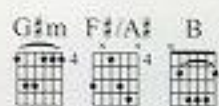
D \flat G \flat /D \flat D \flat A \flat /D \flat Verse: B G \sharp m7

you. 3. We were stran - gers on a

dim. *mp*

B/A F \sharp m7 B G \sharp m7 E(9) F \sharp

cra - zy ad - ven - ture nev - er dream - ing how our dreams would come true. Now

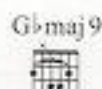


here we stand, un-a - fraid of the fu - ture, at the be - gin - ning with you...

cresc.

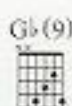
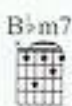


Chorus:

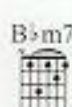


And life is a road, and I want to keep go - ing. Love is a riv - er, I wan - na keep flow - ing.

mf



Life is a road, now... and for - ev - er. Won - der - ful jour - ney! I'll be there when the world stops turn - ing.



I'll be there when the storm is through... In the end, I wan - na be stand - ing at the be - gin - ning with...

Bridge:






you... I knew there was some - bod - y some-








where like me, a - lone... in the dark... Now I know my dream.







... will live on... I've been wait - ing so long... noth - ing's gon - na tear us a - part...



Chorus:






And life is a road, and I want to keep go - ing. Love is a riv - er, I wan - na keep flow - ing.



Cm7

A \flat (9)B \flat susB \flat E \flat 

Life is a road, now and for-ev-er, Won-der-ful jour - ney! I'll be there when the world stops turn-ing,

A \flat maj9

Cm7

A \flat (9)B \flat susB \flat 

I'll be there when the storm is through... In the end, I wan - na be stand-ing at the be - gin - ning with,

you...

E \flat A \flat maj9

Cm7



Chorus:

A \flat (9)B \flat susE \flat A \flat maj9

Life is a road, and I want to keep go - ing. Love is a riv-er, I wan - na keep flow-ing

E \flat

on. Start-ing out on a jour - ney. Life is a road, and I want to keep go - ing.

A \flat maj9 Cm7 A \flat (9) B \flat sus

Love is a riv-er, I wan - na keep flow-ing. In the end, I wan - na be stand-ing at the be - gin - ning.

dim.

E \flat A \flat /C E \flat B \flat

with you.

mp

E \flat A \flat /C E \flat Cm7 A \flat E \flat