

HEAVEN IS A PLACE ON EARTH



Words and Music by
ELLEN SHIPLEY/RICK NOWELS

CHORUS

C#m A B C#m E A

Ooh ba - by do you know what that's worth? Ooh hea - ven is a

B C#m A B C#m

place on — earth — they say in hea - ven love comes first

E A B C#m E A

we'll make hea - ven a — place on — earth — ooh hea - ven is a

B C#m A B C#m

place on — earth. —

E A B C#m A

This system contains the first five measures of the piece. It features guitar chord diagrams for E, A, B, C#m, and A. The piano accompaniment consists of a treble clef with a melody and a bass clef with a bass line. The key signature has three sharps (F#, C#, G#) and the time signature is 4/4.

B C#m E A B

This system contains the next five measures. It features guitar chord diagrams for B, C#m, E, A, and B. The piano accompaniment continues with the same treble and bass clefs. The time signature changes to 2/4 for the final two measures of this system.

C#m7 E

This system contains the next five measures, including the first two lines of lyrics. It features guitar chord diagrams for C#m7 and E. The piano accompaniment continues. The time signature is 4/4.

1. When the night falls
2. feel a

B A B

This system contains the final five measures of the piece. It features guitar chord diagrams for B, A, and B. The piano accompaniment continues. The time signature is 4/4.

down lone I wait for you and you come a round and the
I reach for you and you bring me home when I'm

E B A

world's_ a - live_ with the sound of kids_ on the
lost_ at_ sea_ I hear your voice_ and it

B G A

street out - side_ when you walk in - to the room_
car - ries me_ in this world we're just be - gin - ning -

Gmaj7 A F#m7

you pull me close and we start to move_ and were spin - ning with the
to un - der - stand the miracle of living_ ba - by I was a -

Gmaj7(+9) Em7(sus4) F#m7 G(+9) A

stars a - bove_ and you lift me up in a wave of love_
fraid be - fore_ I'm not a - fraid an - y - more_

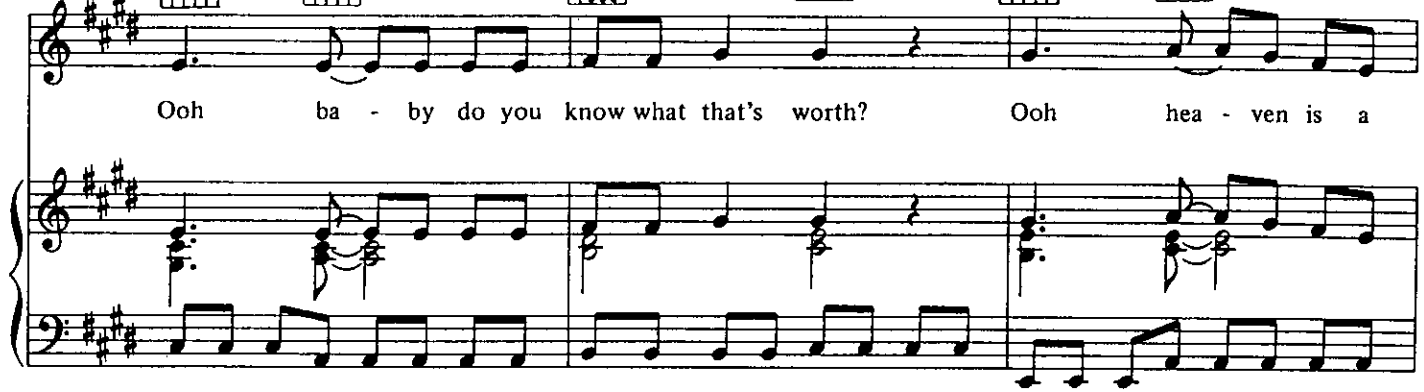
(CHORUS)

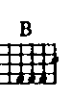

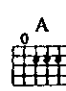
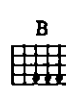
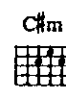






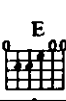
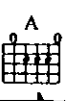
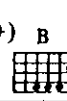
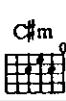

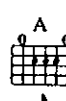
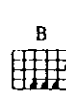

Ooh ba - by do you know what that's worth? Ooh hea - ven is a



place on — earth — they say in hea - ven love comes first





 (to \oplus) 





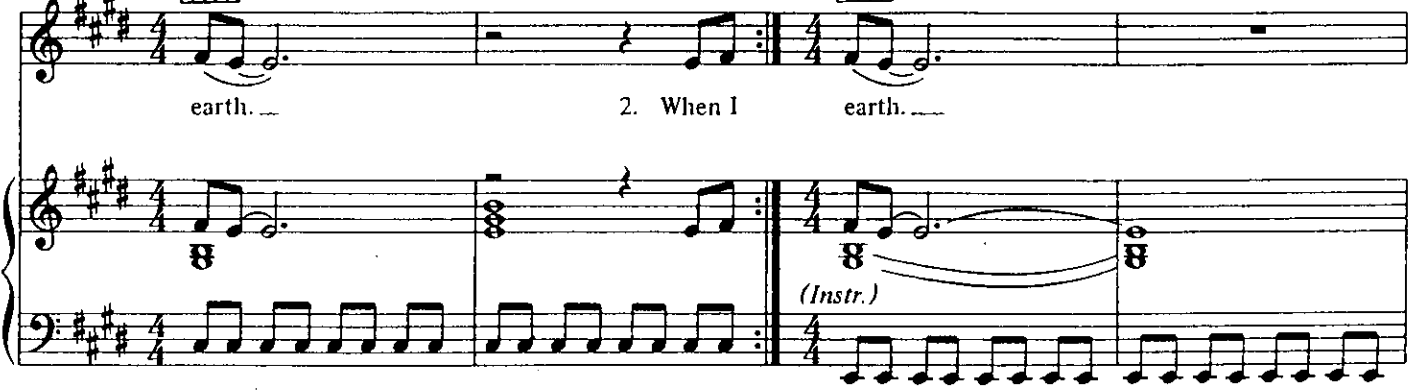
we'll make hea - ven a — place on — earth — ooh hea - ven is a place on —



1. 
 2. 

earth. — 2. When I earth. —

(Instr.)



C♯m7(+9)



Amaj7(+9)



Bsus4



B



C♯m7(+9)



Amaj7(+9)



Bsus4



B

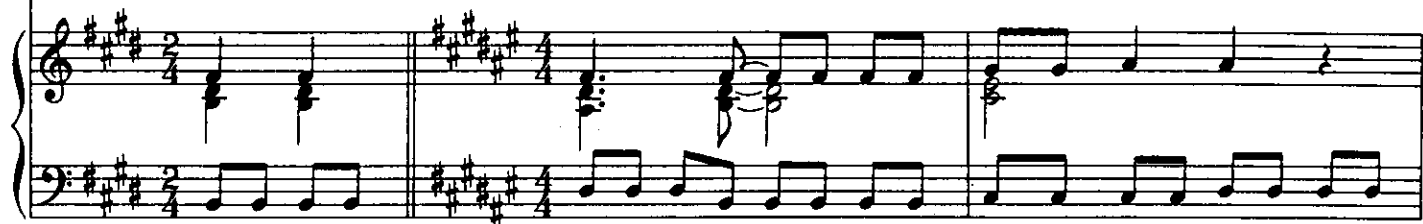


D. § al Coda ♠

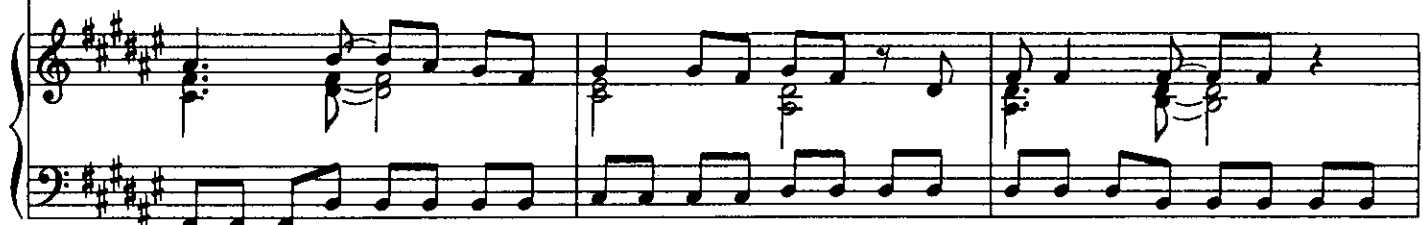
CODA



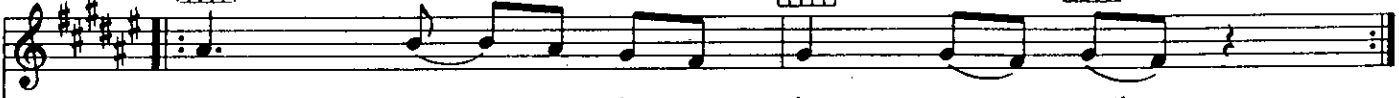
Ooh ba - by do you know what that's worth?



Ooh hea - ven is a place on — earth — they say in hea - ven



love comes first we'll make hea - ven a — place on — earth —



Ooh hea - ven is a place on — earth —

