

I Never Knew

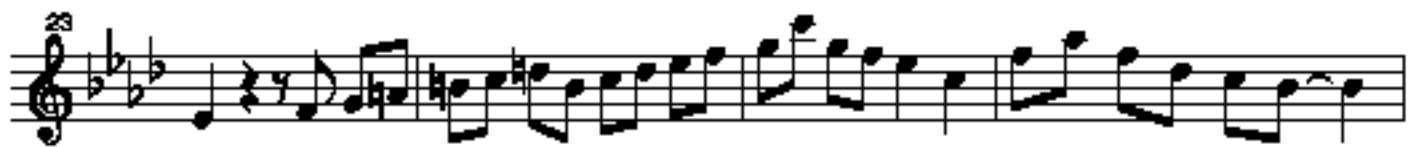
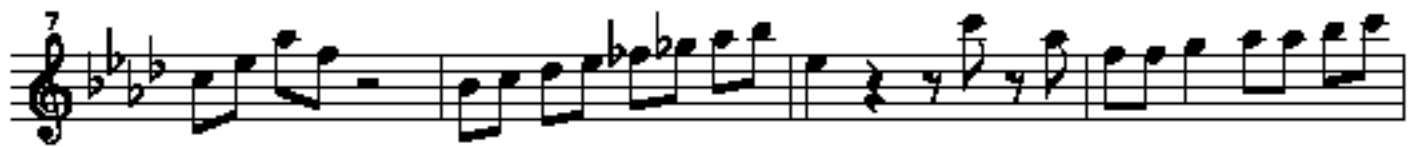
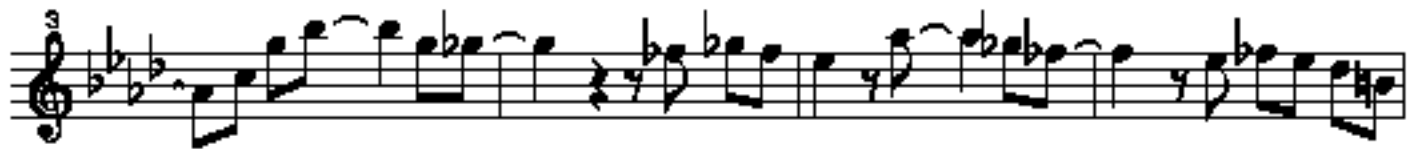
solo by Kenny Burrell

transcribed by Adam Good

2 bar pickup



A



Musical score for the piece "I Never Knew cont'd". The score consists of ten staves of music, all in treble clef and 3/4 time. The key signature is three flats (B-flat, E-flat, A-flat). The music is written in a single melodic line. The first staff begins with a measure number of 31. The second staff begins with 38. The third staff begins with 45. The fourth staff begins with 52. The fifth staff begins with 59. The sixth staff begins with 66. The seventh staff begins with 73. The eighth staff begins with 80. The ninth staff begins with 87. The tenth staff begins with 94. The music features various rhythmic patterns, including eighth and sixteenth notes, and rests. There are several trills marked with a '3' and a slur, and some notes are marked with a flat sign.

I Never Knew (changes)

The image displays a guitar chord chart for the song "I Never Knew (changes)". It consists of eight systems, each containing a treble clef staff with a key signature of one flat (Bb) and a set of four guitar chords. The chords are written in a standard format, with accidentals (sharps and flats) indicating the specific notes. The systems are numbered 67, 71, 75, 79, 83, 87, 91, and 95, indicating the starting measure for each system. The chords are as follows:

- System 67: Ab, Dømin7, Ab, Dømin7 Gb7
- System 71: Ab, Bømin7 Eø7, Ab
- System 75: Ab, Dømin7, Ab, Dømin7 Gb7
- System 79: Ab, Bømin7 Eø7, Ab, G7
- System 83: Gmin7, G7, Gmin7, Dm7(b5) G7
- System 87: Gmin7, G7, Gmin7, Bømin7 Eø7
- System 91: Ab, Dømin7, Ab, Dømin7 Gb7
- System 95: Ab, Bømin7 Eø7, Ab